

**MADISON AND WAHSINGTON ELEMENTARY SCHOOL ADDITION & RENOVATION
HURON SCHOOL DISTRICT 2-2
HURON, SOUTH DAKOTA**

KOCH HAZARD ARCHITECTS

ADDENDUM DATE: March 18, 2014

BID DATE: Thursday, March 20, 2014, 2:00 PM @ Instructional Planning Center, Huron School District 2-2

SCOPE OF THIS ADDENDUM:

The following becomes a part of the original Drawings and Project Manual, taking precedence over the items that may conflict.

The bidder shall note receipt and make acknowledgement of this addendum on his bid form, incorporating its provisions in his bid.

Addendum issued to all Prime Contract Bidders and to all others to whom Drawings and Project Manuals have been issued by the Architect or Contractor.

ADDENDUM-3

ITEM NO. 1: PLANHOLDERS LIST

1. See attached.

ITEM NO. 2: CORRECTION OF ITEM 5 ADDENDUM NO. 1

1. Contractors can bid either one building alone, bid both buildings separately or provide one combined bid for both buildings. **Contractors must bid the Madison Elementary School Base Bid along with bidding the Alternates.**

ITEM NO. 3: SECTION 012100 ALLOWANCES

1. 1.6, B., change to read: The contractor is responsible for mechanical and electrical hook-ups and coordinating with Food Service provider for installation of food service equipment. The food service equipment will be furnished and installed by the Food Service provider.

ITEM NO. 4: SECTION 012300 ALTERNATES

1. Modify Alternate No. 1M (Extended Completion Date)

Alternate No.1M: (Extended Completion Date)

2. Under this Alternate, state the amount to be DEDUCTED from the BASE BID for the following:
 - a. Contractor shall deduct from the base bid for extending the final completion date to December 11, 2015 based on the following schedule:
 - i. Work that must be completed by August 07, 2015 includes:
 - ii. Rooms 137 Gymnasium, 142 Cashier, 143 Chemical Storage, 144 Hall, 145 Kitchen & 146 Kitchen Storage.
 - iii. Restrooms 138 & 140 and Custodial Room 139.
 - iv. Mechanical penthouse above stage.
 - v. New boilers & pumps in Room 141.

- b. The mechanical contractors shall be responsible for any temporary piping, ductwork, valves, etc. to match the general contractor's proposed phasing.
- c. The electrical contractor shall be responsible for any temporary lighting, wiring, etc.. to match the general contractor's proposed phasing.
- d. Site work and new construction can be completed during the school year.
- e. The Owner will vacate the existing classrooms after the 2014-2015 school year so the contractor can complete the required remodel work.
- f. The intent of this alternate is to allow the Owner to have full use of the building through the 2014-2015 school year. The contractor may do any interior renovation work they choose during the 2014 summer but must have the entire building available for use by the Owner by August 07, 2014.

ITEM NO. 5: SECTION 084113 ALUMINUM-FRAMED ENTRANCES AND STOREFRONTS

1. Hardware Set 200; add the following:
 - a. 1 Each, Electric Strike, 9600, 630, HS.
 - b. Card Reader and Power Supply furnished by others.

MADISON DRAWINGS

ITEM NO. 6: DRAWING C1.6

1. Notes: add the following; the contractor shall connect the 8" downspout from Area A shown on M3.1 & the 10" downspout from Area B shown on M3.2 to the 18" polyethylene storm sewer.

ITEM NO. 7: DRAWING C1.9

1. See attached revised Drop Inlet Detail.

ITEM NO. 8: DRAWING D5.1

1. See attached Drawing ADD-3/D5.1 for revision to demolition of west elevation.

WASHINGTON DRAWINGS

ITEM NO. 9: DRAWING C1.6

1. Notes: add the following; the contractor shall connect the 8" & 10" downspouts from Area B shown on M3.2 to the 12" polyethylene storm sewer.

ITEM NO. 10: DRAWING C1.7

1. See attached Drawing C1.7 for revision to sanitary sewer.
2. See attached Sanitary Sewer Typical Manhole detail.

ITEM NO. 11: DRAWING C1.8

1. See attached Drawing C1.8 for revision to gas line.

ITEM NO. 12: DRAWING C1.9

1. See attached revised Drop Inlet Detail.

ITEM NO. 13: DRAWING D5.1

1. See attached Drawing ADD-3/D5.1 for revision to demolition of east elevation.

ITEM NO. 14: SUBJECT TO COMPLIANCE WITH REQUIREMENTS OF THE DRAWINGS AND PROJECT MANUAL, THE FOLLOWING PRODUCTS AND EQUIPMENT ARE APPROVED FOR USE IN THE PROJECT:

SECTION	ITEM	MANUFACTURER
087100	Exit Devise	Hager
	Closer	Hager
084113	Aluminum Framed Entrances	Hardware as listed below:
	Continuous Hinge	Hager
	Rim Exit Device	Hager
	Removable Mullion	Hager
	Door Pull	Hager
	Threshold	Hager
	Surface Closer	Hager
	Drop Plate	Hager
	Push Bar & Pull	Hager
	Door Operator	Record-USA
	Actuator	Larco
102113	Toilet Partitions	Legacy Polymer Products, Inc.
329200	Erosion Control Material	Western Excelsior S-2
	Stabilization Fabric	Tencate Mirafi 600X

ITEM NO. 15: MECHANICAL ADDENDUM

1. Mechanical Addendum is attached.

ITEM NO. 16: ELECTRICAL ADDENDUM

1. Electrical Addendum is attached.

END OF ADDENDUM-3

Project Team

PROJECT: Madison and Washington Elem

MANAGER:

PREPARED BY: Tony Taylor

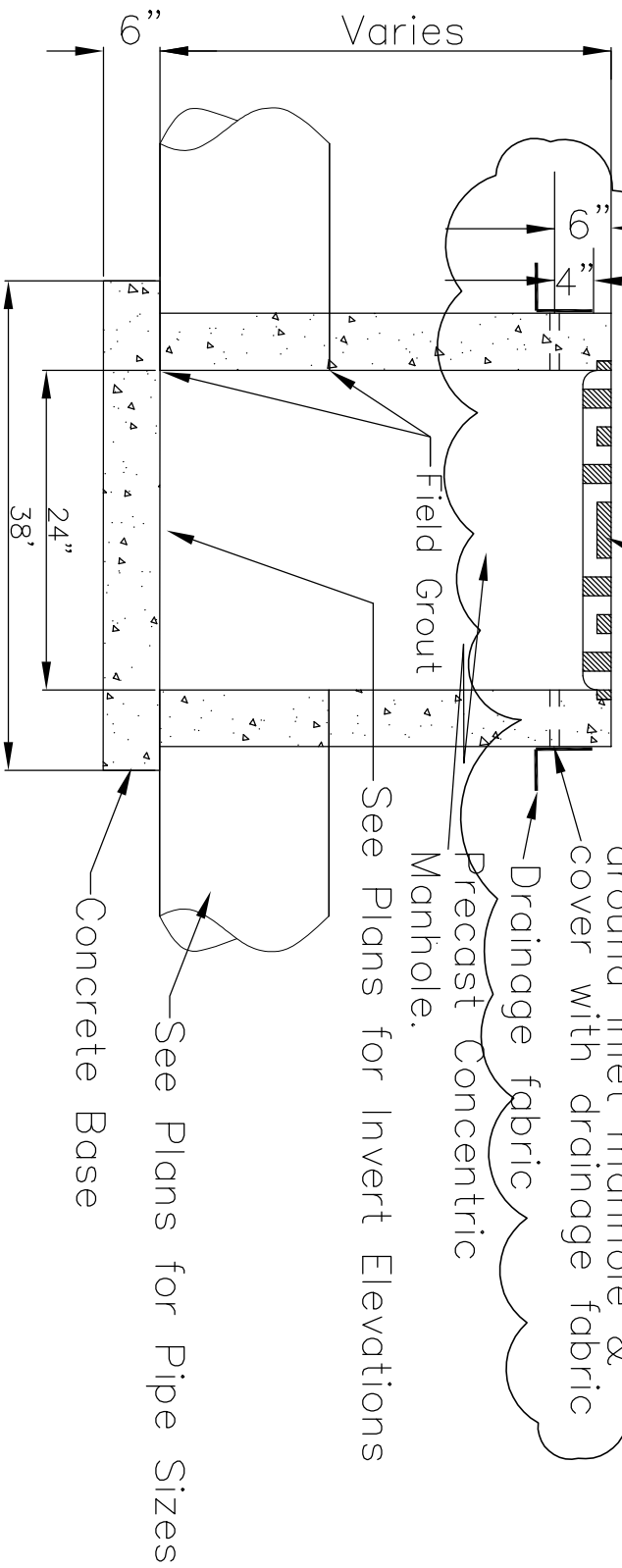
DATE: 3/18/2014



Type	Subscription	Name	Email Address	Discipline	Company	Company Role	Work Phone	Fax Number	City	State	Zip	Permission Set
Group	Unsubscribed	Planholders										
External Contact	Unsubscribed	Cal Muilenburg	calm@santel.net	--	Schoenfelder Construction Inc.	--	605-996-3254		Mitchell	SD	57301	External User
External Contact	Unsubscribed	Tim York	Tim.York@Honeywell.com	--	Honeywell International	--	605-373-3763	605-373-3810	sioux falls	SD	57105	External User
Internal Contact	Unsubscribed	Andrew Grove	agrove@kochhazard.com	Architectural	Koch Hazard Architects	--	605-782-8734	605-336-0438	Sioux Falls	SD	57104	Internal User
Internal Contact	Unsubscribed	Tony Taylor	ttaylor@kochhazard.com	Architectural	Koch Hazard Architects	--	605-782-8740	605-336-0438	Sioux Falls	SD	57104	Internal User
Internal Contact	Unsubscribed	Trevor VanConant	tvancouver@kochhazard.com	Architectural	Koch Hazard Architects	--	605-782-8722	605-336-0438	Sioux Falls	SD	57104	Internal User
External Contact	Unsubscribed	Associated Consulting Engineers	acei@aceinet.com	Electrical, Mechanical	ACEI	--	605-335-3720	605-335-6220	Sioux Falls	SD	57104	External User
External Contact	Unsubscribed	Clinton	clinton@efraimsonelectric.com	Electrical	Efraimson Electric	--	605-628-2605		Bryant	SD	57221	External User
External Contact	Unsubscribed	Greg Heil	heilelectric@santel.net	Electrical	Heil Electric	--	605-796-4072	605-796-4073	Woonsocket	SD	57385	External User
External Contact	Unsubscribed	Jennifer Yao	jyeo@muthelectric.com	Electrical	Muth Electric	--	605-996-3983	605-996-2203	Mitchell	SD	57301	External User
External Contact	Unsubscribed	Jeremy Coom	jjcoon101@yahoo.com	Electrical	JC Electric	--	605-350-4306		Wolsey	SD	57384	External User
External Contact	Unsubscribed	Josh Dede	josh.dede@efraimsonelectric.com	Electrical	Efraimson Electric	--	605-628-2605		Bryant	SD	57221	External User
External Contact	Unsubscribed	L & S Electric	123lselectric@gmail.com	Electrical	L&S Electric	--	507-723-4875		Springfield	MN	56087	External User
External Contact	Unsubscribed	Larry Giesler	lgiesler@fuldaelectric.com	Electrical	Fulda Electric Service Inc	--	605-582-7669	605-582-7670	Brandon	SD	57005	External User
External Contact	Unsubscribed	Lori Krummer	tkelectric@qwestoffice.net	Electrical	TK Electric	--	605-995-0595	605-995-0435	Mitchell	South Dakota	57301	External User
External Contact	Unsubscribed	Leonard Matthaei	matthaei@unitelsd.com	Excavating	Matthaei Excavating	--	605-296-3185	605-296-3785	Canastota	South Dakota	57012	External User
External Contact	Unsubscribed	Brent Forest	forest_excavating@hotmail.com	Excavator	Forest Excavating	--	605-532-5251	605-532-5391	Clark	SD	57225	External User
External Contact	Unsubscribed	Tim Travis	tdavis.midland@santel.net	Excavator	Midland Contracting Inc.	--	605-352-2400	605-352-9064	Huron	SD	57350	External User
External Contact	Unsubscribed	Aberdeen Builders Exchange	dakotabuild@midconetwork.com	Exchange	Aberdeen Builders Exchange	--	605-225-4733	605-225-4733	Aberdeen	SD	57401	External User
External Contact	Unsubscribed	Cindy Adams	mbiplanroom-dsm@mbionline.com	Exchange	Master Builders of Iowa	--	515-288-8904	515-288-2617	Des Moines	IA	50309	External User
External Contact	Unsubscribed	Construction Industry Center	cic@constructionindustrycenter.com	Exchange	Construction Industry Center	--	605-343-5252	605-343-4591	Rapid City	SD	577022	External User
External Contact	Unsubscribed	Construction Plans Exchange	cpeinc@midconetwork.com	Exchange	Construction Plans Exchange	--	701-258-4215	701-258-1391	Bismark	ND	58501	External User
External Contact	Unsubscribed	Fargo-Moorhead Exchange	info@fmbx.org	Exchange	Fargo-Moorhead Exchange	--	701-237-6772	701-232-1653	Fargo	ND	58103	External User
External Contact	Unsubscribed	iSqFt. Planroom	AGCMinnesota@iSqFt.com	Exchange	iSqFt Planroom / Franz Reprographics	--	800-364-2059	866-570-8187	Brooklyn Center	MN	55430	External User
External Contact	Unsubscribed	Joanna Dahn	Joanna.dahn@mhfi.com	Exchange	McGraw-Hill Construction	--	651-528-8872	651-528-8892	Hot Springs	AR	71913	External User
External Contact	Unsubscribed	Lincoln Builders Bureau	builders@cornhusker.net	Exchange	Lincoln Builders Bureau	--	402-421-8332	402-421-8334	Lincoln	NE	68516	External User

Type	Subscription	Name	Email Address	Discipline	Company	Company Role	Work Phone	Fax Number	City	State	Zip	Permission Set
External Contact	Unsubscribed	Minneapolis Builders Exchange	jeffb@mbex.org	Exchange	Minneapolis Builders Exchange	--	612-381-2620	612-381-2621	Minneapolis	MN	55403	External User
External Contact	Unsubscribed	Minneapolis Builders Exchange	rl@mbex.org	Exchange	Minneapolis Builders Exchange	--	612-381-2620	612-381-2621	Minneapolis	MN	55403	External User
External Contact	Unsubscribed	Omaha Builders Exchange	omahaplanroom-obe@mbionline.com	Exchange	Omaha Builders Exchange	--	402-593-6908	402-593-6912	Omaha	NE	68127	External User
External Contact	Unsubscribed	Plains Builders Exchange	info@plainsbuilders.com	Exchange	Plains Builders Exchange	--	605-334-8886	605-334-0112	Sioux Falls	SD	57101	External User
External Contact	Unsubscribed	Reed Construction Data	docprocessing@reedbusiness.com	Exchange	Reed Construction Data	--	763-537-7117	800-303-8629	Norcross	GA	30092	External User
External Contact	Unsubscribed	Sioux City Construction League	SCPlanroom@siouxlanet.net	Exchange	Sioux City Construction League	--	712-255-9730	712-255-3915	Sioux City	IA	57706	External User
External Contact	Unsubscribed	Sioux Falls Builders Exchange	info@sfbx.com	Exchange	Sioux Falls Builders Exchange	--	605-357-8687	605-357-8655	Sioux Falls	SD	57104	External User
External Contact	Unsubscribed	Watertown Builders Exchange	watertownbuildersexchange@iw.net	Exchange	Watertown Builders Exchange	--	605-886-4932	605-753-656	Watertown	SD	57201	External User
External Contact	Unsubscribed	Erin McGaugh	erin@dakotarestantsupply.com	Food Service	Dakota Restaurant Supply	--	605-352-1800	605-352-8059	Huron	SD	57350	External User
External Contact	Unsubscribed	Keith Schumaker	keith.schumacher@cashwa.com	Food Service	CWD Distributing	--	800-888-2617		Aberdeen	SD	57401	External User
External Contact	Unsubscribed	Tom Vandevort	tomv@isdakota.com	Food Service	Institution Services	--	605-339-3931		Sioux Falls	SD	57104	External User
External Contact	Unsubscribed	Alan Breck	abreck@henrycarlson.com	General Contractor	Henry Carlson Company	--	605-336-2410	605-332-1314	Sioux Falls	SD	57104	External User
External Contact	Unsubscribed	Gray Construction	dustin@grayconstruction.com	General Contractor	Gray Construction	--	605-886-3102	605-886-7139	Watertown	SD	57201	External User
External Contact	Unsubscribed	Jack Hollinsworth	jhollinsworth@jdhconstruction.biz	General Contractor	JDH Construction	--	605-725-0050	605-725-0049	Aberdeen	SD	57402	External User
External Contact	Unsubscribed	JDH Construction	rjarvis@jdhconstruction.biz	General Contractor	JDH Construction	--	605-725-0050		Aberdeen	SD	57401	External User
External Contact	Unsubscribed	Kevin Bender	benderkevin@welfl.com	General Contractor	Welfl Construction Corporation	--	605-665-3258	605-665-9384	Yankton	SD	57078	External User
External Contact	Unsubscribed	O.L. Bussmus Construction, Inc.	olbconstruction@santel.net	General Contractor	O.L. Bussmus Construction Inc.	--	605-996-4906	605-996-2771	Mitchell	SD	57301	External User
External Contact	Unsubscribed	Paula Alexander	paula@sharpe-enter.com	General Contractor	Sharpe Enterprises, Inc.	--	605-945-1260	605-945-1265	Pierre	SD	57532	External User
External Contact	Unsubscribed	Stacie Rasmussen	stacier@tellinghuisen.com	General Contractor	Tellinghuisen Construction	--	605-625-5469		Willow Lake	SD	57278	External User
External Contact	Unsubscribed	Teryl Kelley	tkelley@swiftconinc.com	General Contractor	Swift Contractors, Inc.	--	605-368-2185	605-368-2194	Sioux Falls	SD	57108	External User
External Contact	Unsubscribed	Todd Running	todd@gilhaugan.com	General Contractor	Gil Haugan Construction	--	605-336-6082	605-336-0051	Sioux Fall	SD	57118	External User
External Contact	Unsubscribed	Active Heating Inc.	jasonr@activeheatinginc.com	HVAC	Active Heating Inc.	--	605-882-2663	605-882-3325	Watertown	SD	57201	External User
External Contact	Unsubscribed	Chuck Hander	chuckh@hander.com	HVAC	Hander Plumbing & Heating, Inc.	--	605-339-9633		Sioux Falls	SD	57104	External User
External Contact	Unsubscribed	Curt Kempf	curtshvac@midconetwork.com	HVAC	Curt's Heating & Cooling	--	605-352-5316		Huron	SD	57350	External User
External Contact	Unsubscribed	Dahlin Drywall Inc.	dahlinc@midconetwork.com	Interiors	Dahlin Drywall Inc	--	605-665-1817	605-665-6894	Yankton	SD	57078	External User
External Contact	Unsubscribed	Marc Mebius	marcmebius@hotmail.com	Landscape	Mebius Nursery	--	605-996-9198	605-996-9199	Mitchell	SD	57301	External User
External Contact	Unsubscribed	Roger Schroeder	ssmasonry@hcinet.net	Masonry	S & S Masonry	--	605-384-4545	605-384-4224	Wagner	SD	57380	External User

Type	Subscription	Name	Email Address	Discipline	Company	Company Role	Work Phone	Fax Number	City	State	Zip	Permission Set
External Contact	Unsubscribed	Brad Shoup	bshoup@aceinet.com	Mechanical, Electrical	Associated Consulting Engineering	--	605-357-4775	605-335-6220	Sioux Falls	SD	57104	External User
External Contact	Unsubscribed	Matt Haugan	mhaugan@aceinet.com	Mechanical, Electrical	Associated Consulting Engineering	--	605-335-3720		Sioux Falls	SD	57104	External User
External Contact	Unsubscribed	Michele deWit	mdewit@aceinet.com	Mechanical, Electrical	Associated Consulting Engineering	--	605-357-4769	605-335-6220	Sioux Falls	SD	57104	External User
External Contact	Unsubscribed	Nick Hunt	nhunt@aceinet.com	Mechanical, Electrical	Associated Consulting Engineering	--	605-357-4770		Sioux Falls	SD	57104	External User
External Contact	Unsubscribed	Custom Sheet Metal	forereuer@aol.com	Other	Custom Sheet Metal	--	605-225-6560	605-225-6595	Aberdeen	SD	57401	External User
External Contact	Unsubscribed	Jesse Wolfe	jesse@foxdrywall.com	Other	Fox Drywall & Plastering, Inc.	--	605-368-5557	605-368-5572	Tea	SD	57064	External User
External Contact	Unsubscribed	Jim Pfaltzgraff	jim.pfaltzgraff@submitalexchange.com	Other	Submittal Exchange	--	800-714-0024 ext 267		Des Moines	IA	50309	External User
External Contact	Unsubscribed	Rock Lamis	rock@pmsteel.net	Other	P&M Steel	--	339-0141	339-0169	Sioux Falls	SD	57104	External User
External Contact	Unsubscribed	Roger Schneider	roger.schneider@schoolspecialty.com	Other	School Specialty	--	800-305-0174 ext. 1671		Mansfield	Ohio	44903	External User
External Contact	Unsubscribed	Kelly Christopherson	kelly.christopherson@k12.sd.us	Owner/Operator	Huron School District 2-2	--	605-353-6995		Huron	SD	57350-0949	External User
External Contact	Unsubscribed	Paul Merriman	paul.merriman@state.sd.us	Owner/Operator	State of South Dakota	--	605-773-3562	605-773-6631	Pierre	SD	57501	External User
External Contact	Unsubscribed	Roger Bell	insp.huronsd@midconetwork.com	Owner/Operator	Huron Dept. of Health	--	605-353-7135		Huron	SD	57350	External User
External Contact	Unsubscribed	Bill Barthalow	asphaltpaving@midconetwork.com	Paving	Asphalt Paving	--	605-352-3502		Huron	SD	57350	External User
External Contact	Unsubscribed	Cadd Engineering	joe@repro360.com	Printing	CADD Engineering	--	605-332-2550		Sioux Falls	SD	57106	External User
External Contact	Unsubscribed	Steve Pelzl	twincityrf@midco.net	Roofing Contractor	Twin City Roofing	--	605-225-5932	605-225-5938	Aberdeen	South Dakota	57401	External User
External Contact	Unsubscribed	Josh Paulson	josh@paulsonair.com	Sheet Metal	Paulson Sheet Metal	--	605-996-8616		Mitchell	SD	57301	External User
External Contact	Unsubscribed	Greg Hannestad	greg@seasd.com	Structural	Structural Engineering Associates	--	605-334-0188	605-334-1669	Sioux Falls	SD	57103	External User
External Contact	Unsubscribed	Rob Maher	robmaher@seasd.com	Structural	Structural Engineering Associates	--	605-334-0188	605-334-1669	Sioux Falls	SD	57103	External User



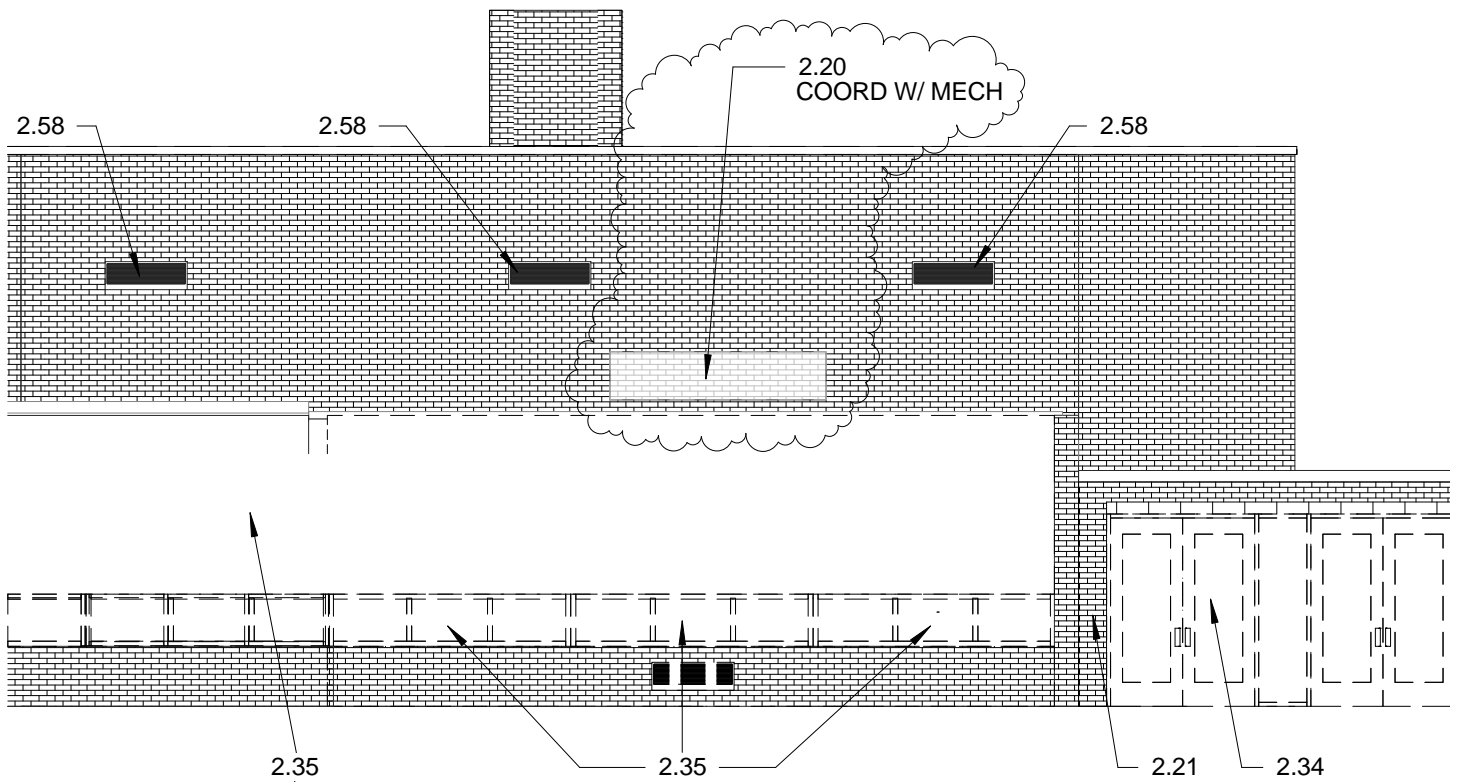
In the inline drain w/dome " in the court yard, drill 4-1" holes around pipe surface and cover with drainage fabric

Drill 4-1" dia. hole around inline drains cover with drainage fabric
 Sewer Pipe Grate
 (Neenah R 4040-24)
 Square Opening, or Equal)
 Drill 8-1" dia. hole around inlet manhole & cover with drainage fabric
 Drainage fabric
 Precast Concentric Manhole.

DROP INLET DETAIL
 (FOR MADISON & WASHINGTON SCHOOLS)

KEYNOTES

- 2.20 REMOVE PORTION OF MASONRY WALL
- 2.21 REMOVE MASONRY WALL
- 2.34 REMOVE DOOR & FRAME
- 2.35 REMOVE WINDOW UNIT
- 2.58 REMOVE LOUVER



DEMOLITION EAST ELEVATION

1/8" = 1'-0"



K O C H H A Z A R D
A R C H I T E C T S

431 North Phillips 200 Sioux Falls, SD 57104 T: 605-336-3718 F: 605-336-0438 W: kochhazard.com

EXISTING EAST ELEVATION

Huron School District
Washington 4 - 5 Center Addition & Renovation
Huron, SD

PROJECT NO.:
1277A

DRAWN BY:
ADG

DATE:
03/17/14

COPYRIGHT:
2013

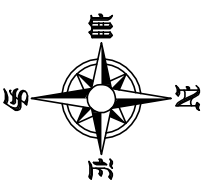
ADD-3
D5.1



431 North Phillips 200
 Sioux Falls, SD 57104
 T: 605.336.3718
 F: 605.336.0438
 W: kochhazard.com

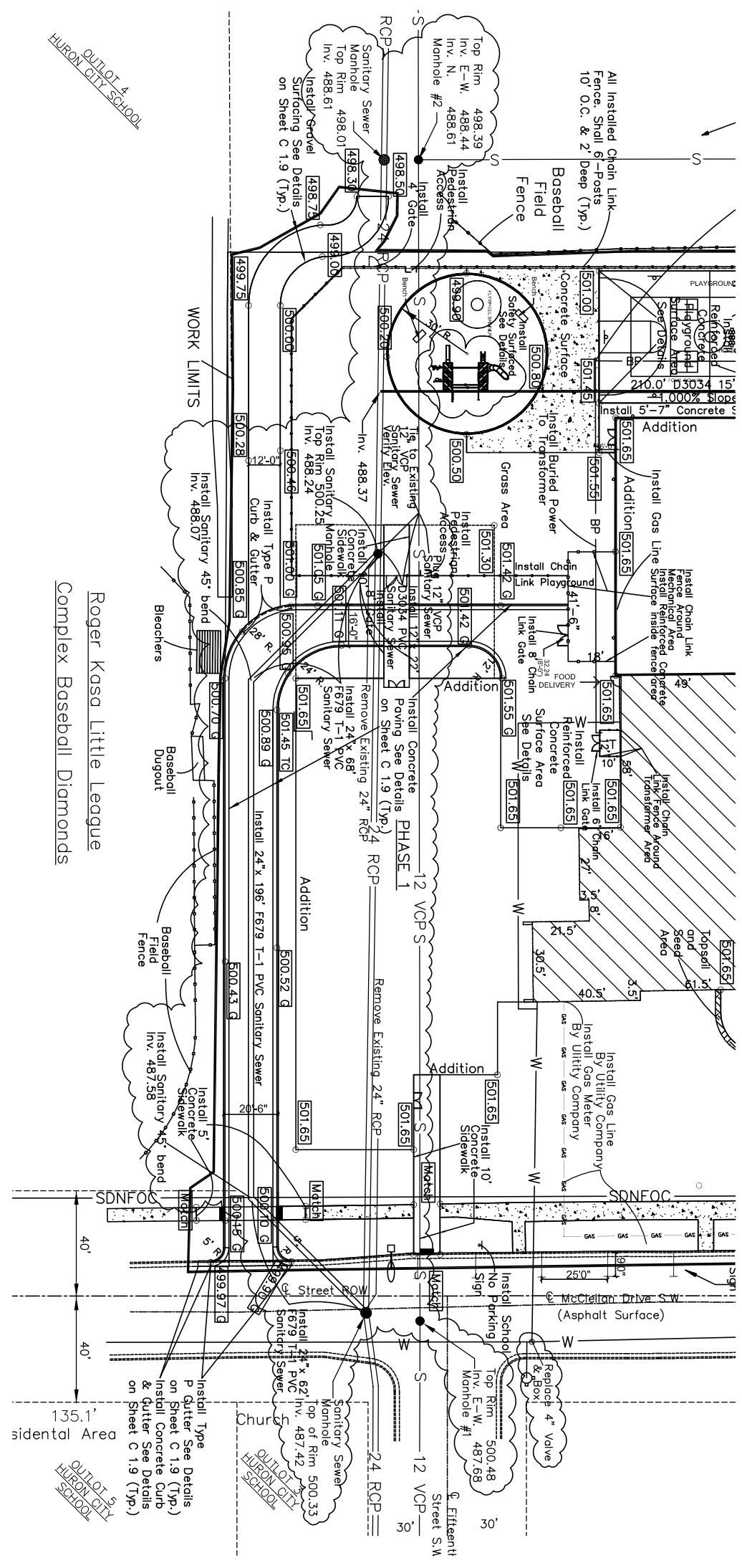


PERCE & HARRIS
 ENGINEERING
 1001 N. UNIVERSITY BLVD.
 SUITE 100
 SIOUX FALLS, SD 57104



PROJECT NO. 1278
 DRAWN BY: D46
 DATE: 3/10/14
 COPYRIGHT: 2014
 PROJECT: WASHINGTON ELEMENTARY SCHOOL
 SITE PHASE II

SHEET TITLE:
 GRADING, SANITARIUM,
 PLAYGROUND, AND
 PARENTS DROP-OFF/
 BUS PICK-UP AREA
 BUS & PAVEMENT
 C 1.7



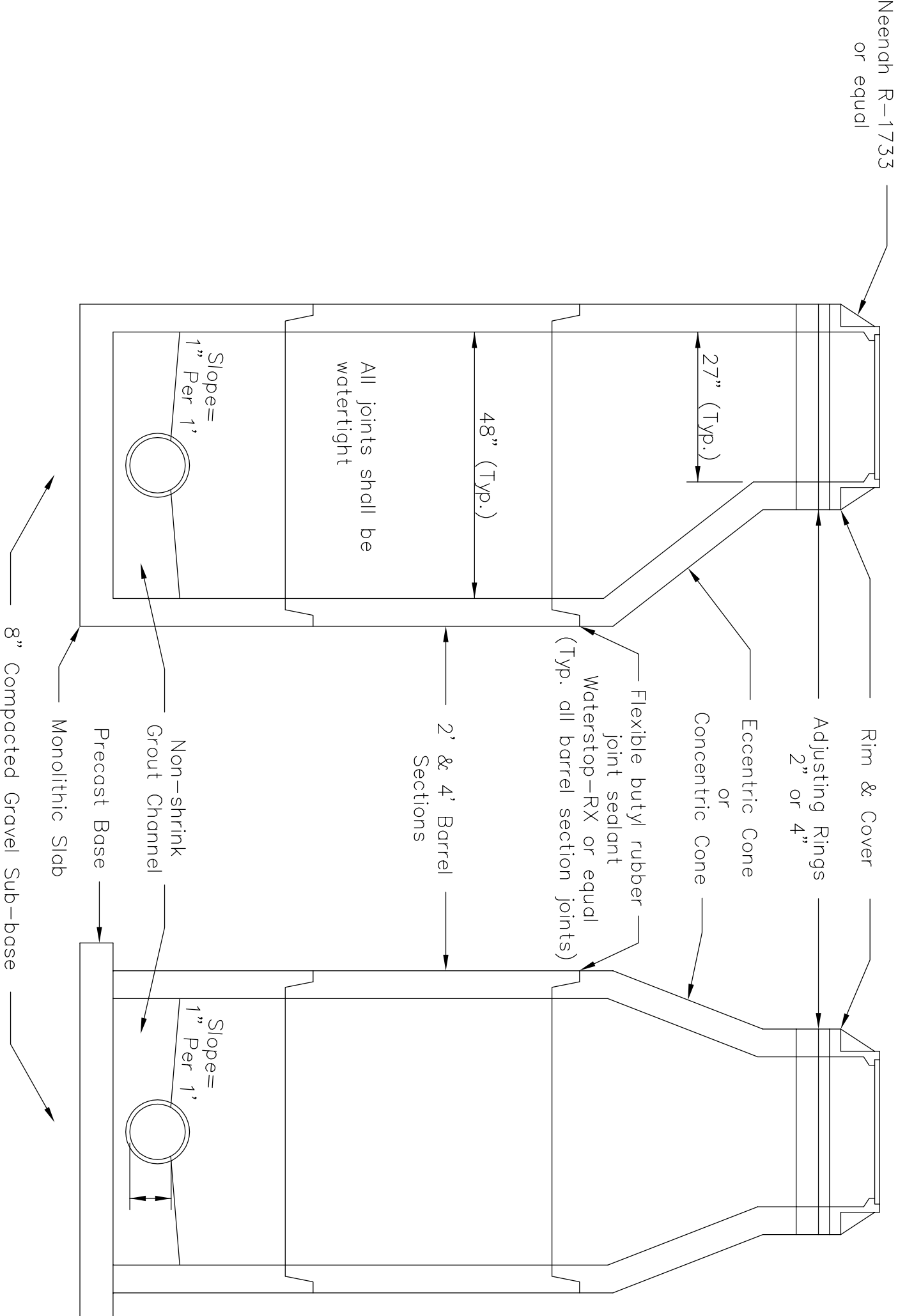
CONCRETE ROADWAY PAVEMENT AREA & GRAVEL ROADWAY AREA

Scale = 1"=30'

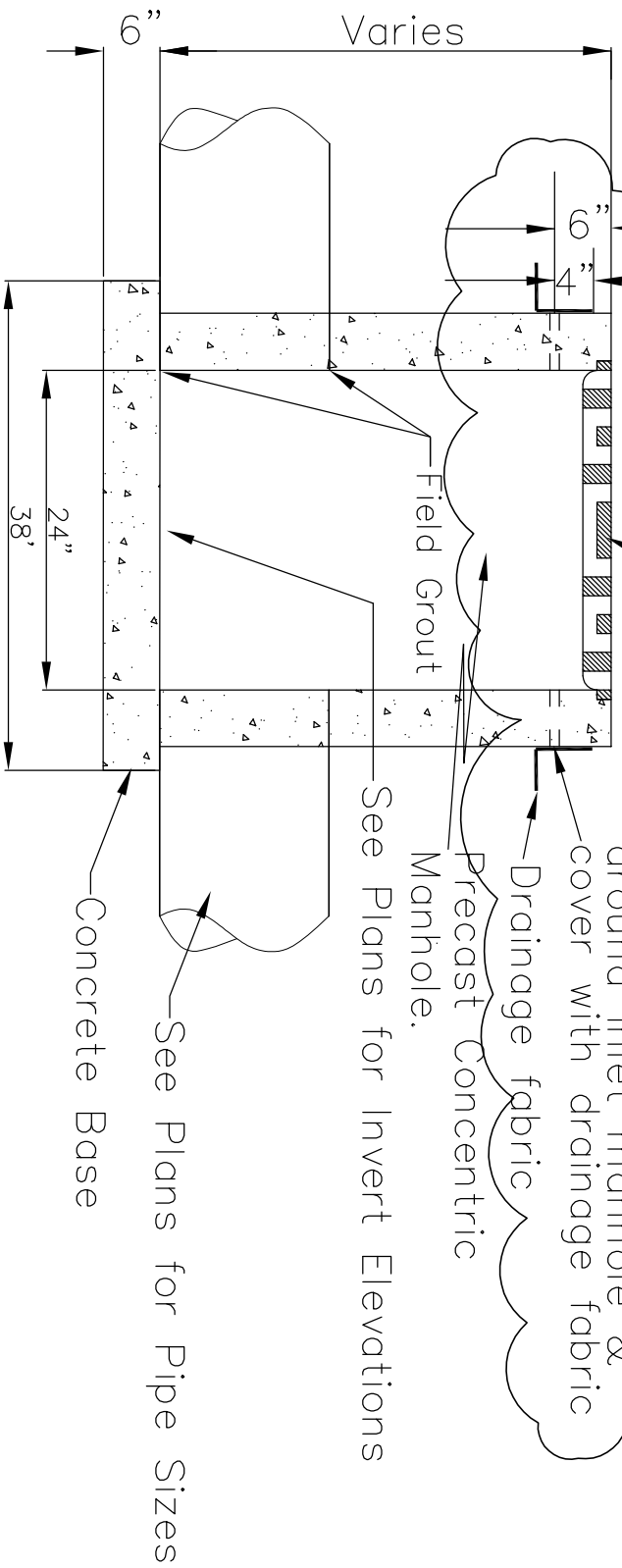
Roger Kasa Little League
 Complex Baseball Diamonds

OUTLOT 4
 HURON CITY SCHOOL

OUTLOT 5
 HURON CITY SCHOOL



SANITARY SEWER TYPICAL MANHOLE



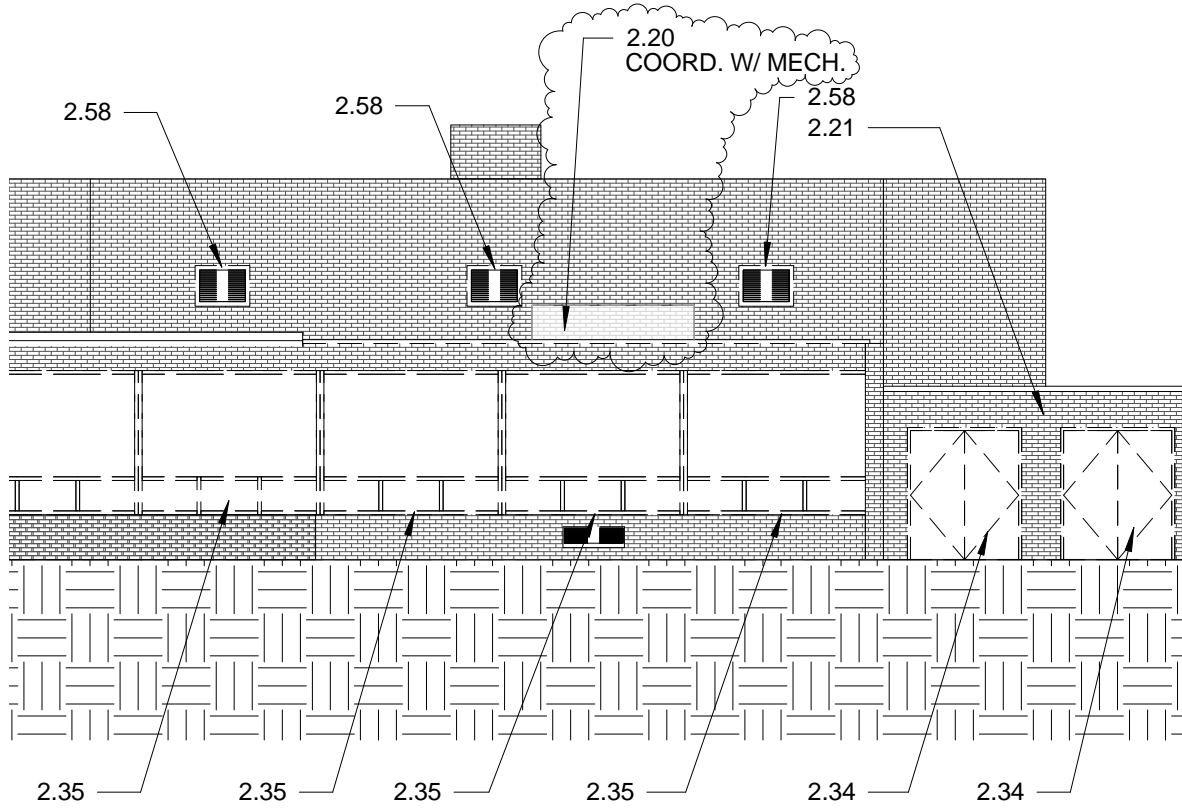
In the inline drain w/dome " in the court yard, drill 4-1" holes around pipe surface and cover with drainage fabric

Drill 4-1" dia. hole around inline drains cover with drainage fabric
 Sewer Pipe Grate
 (Neenah R 4040-24)
 Square Opening, or Equal)
 Drill 8-1" dia. hole around inlet manhole & cover with drainage fabric
 Drainage fabric
 Precast Concentric Manhole.

DROP INLET DETAIL
 (FOR MADISON & WASHINGTON SCHOOLS)

KEYNOTES

- 2.20 REMOVE PORTION OF MASONRY WALL
- 2.21 REMOVE MASONRY WALL
- 2.34 REMOVE DOOR & FRAME
- 2.35 REMOVE WINDOW UNIT
- 2.58 REMOVE LOUVER



DEMOLITION WEST ELEVATION

3/32" = 1'-0"



K O C H H A Z A R D
A R C H I T E C T S

431 North Phillips 200 Sioux Falls, SD 57104 T: 605-336-3718 F: 605-336-0438 W: kochhazard.com

EXISTING WEST ELEVATION

HURON SCHOOL DISTRICT
MADISON 2 - 3 CENTER
ADDITION AND RENOVATION
HURON, SD

PROJECT NO.:
1277A

DRAWN BY:
ADG

DATE:
03/17/14

COPYRIGHT:
2012

ADD-3
D5.1

ADDENDUM M2

MADISON ELEMENTARY SCHOOL
ADDITION & RENOVATIONS
HURON, SD

March 18, 2014

Associated Consulting Engineering, Inc.
340 South Phillips Avenue
Sioux Falls SD 57104-6319

SCOPE OF THIS ADDENDUM:

The following becomes a part of the original Drawings and Project Manual, taking precedence over those items that may conflict.

The Bidder shall note receipt and make acknowledgment of this addendum on the bid form, incorporating its provisions in their bid.

This addendum has been issued to all bidders and to all others to whom Drawings and Project Manuals have been issued by the office of the Architect/Engineer.

DRAWING ITEMS:

DRAWING SHEET M5.1 SCHEDULES

1. BOILER SCHEDULE:

Substitute the following:

Model No. 2000 in lieu of the 2500 scheduled.

2000 AGA INPUT (MBH) in lieu of the 2500 scheduled.

1896 AGA OUTPUT (MBH) in lieu of the 2370 scheduled.

SUBSTITUTIONS AND PRODUCT OPTIONS

The following material or equipment furnished by the manufacturers listed may be substituted as equal, providing that each item, material and piece of equipment conforms to the design and requirements of the Drawings and Project Manual.

SECTION	ITEM	MANUFACTURER
220400	Faucets & Flush Valves	Delta
220400	Lavatory	Willoughby
220400	Two-Station Washbasin – Sensor Operated	Acorn Engineering
220600	Radiant Ceiling Panels	Airtite TWA Panel Systems
220600	Calibrated Flow Control Valves	NuTech
220600	Automatic Flow Control Valves	NuTech
230800	AHU	Dunham-Bush
230800	Chiller	Dunham-Bush
230800	Roof Curbs	CDI
230800	Spiral Duct	Lindlab

230800	Adjustable Variable Frequency Drives	Lewis & Lambert
230800	PRV	Danfoss
		Aerovent
		Soler & Palau
		Twin City Fan
230800	Square Centrifugal In-Line Fan	Aerovent
		Soler & Palau
		Twin City Fan
230800	Ceiling In-Line Exhaust Fan	Soler & Palau
		Twin City Fan
230800	Combination Fire/Smoke Dampers	NCA Manufacturing
230800	Fire Dampers	NCA Manufacturing
230800	Louvers	NCA Manufacturing
		Air Balance
230800	Backdraft Relief Dampers	Acme
230800	PRV Backdraft Dampers	Aerovent
		Soler & Palau
230800	Counter Balanced Backdraft Dampers	Acme
		Air Balance
230800	Exhaust/Relief Hood	Acme
		Twin City Fan
230800	Outdoor Air Intake Hood	Acme
		Twin City Fan
230800	Kitchen Hood	Captive Aire
		EconAire
230800	Wall Canopy Hood	Captive Aire
230800	Fabric duct	KE Fibertec
		Fabric Air
		ADC (Air Distribution Concepts)

END OF ADDENDUM

ADDENDUM M2

WASHINGTON ELEMENTARY SCHOOL
ADDITION & RENOVATIONS
HURON, SD

March 18, 2014

Associated Consulting Engineering, Inc.
340 South Phillips Avenue
Sioux Falls SD 57104-6319

SCOPE OF THIS ADDENDUM:

The following becomes a part of the original Drawings and Project Manual, taking precedence over those items that may conflict.

The Bidder shall note receipt and make acknowledgment of this addendum on the bid form, incorporating its provisions in their bid.

This addendum has been issued to all bidders and to all others to whom Drawings and Project Manuals have been issued by the office of the Architect/Engineer.

DRAWING ITEMS:

DRAWING SHEET M3.7 – FLOOR PLAN AREA “C” – PLUMBING & HEATING

1. Relocate Gas Meter
2. Extend gas piping to new Gas Meter Location.
3. Revised Note 33 to read: GAS METER & GAS SERVICE. SEE SPECIFICATIONS. GAS PIPING SIZED AT 2 POUND. 275 FEET TOTAL LENGTH. 4575 MBH AT 2 PSIG & 1 PSIG PRESSURE DROP.
4. See attached Drawing Sheet RM3.7, dated 3-18-14, sheet 1 of 4, 2 of 4 & 3 of 4.

DRAWING SHEET M3.8 – FLOOR PLAN AREA “D” – PLUMBING & HEATING

1. Extend gas piping to new Gas Meter Location.
2. See attached Drawing Sheet RM3.8, dated 3-18-14, sheet 4 of 4.

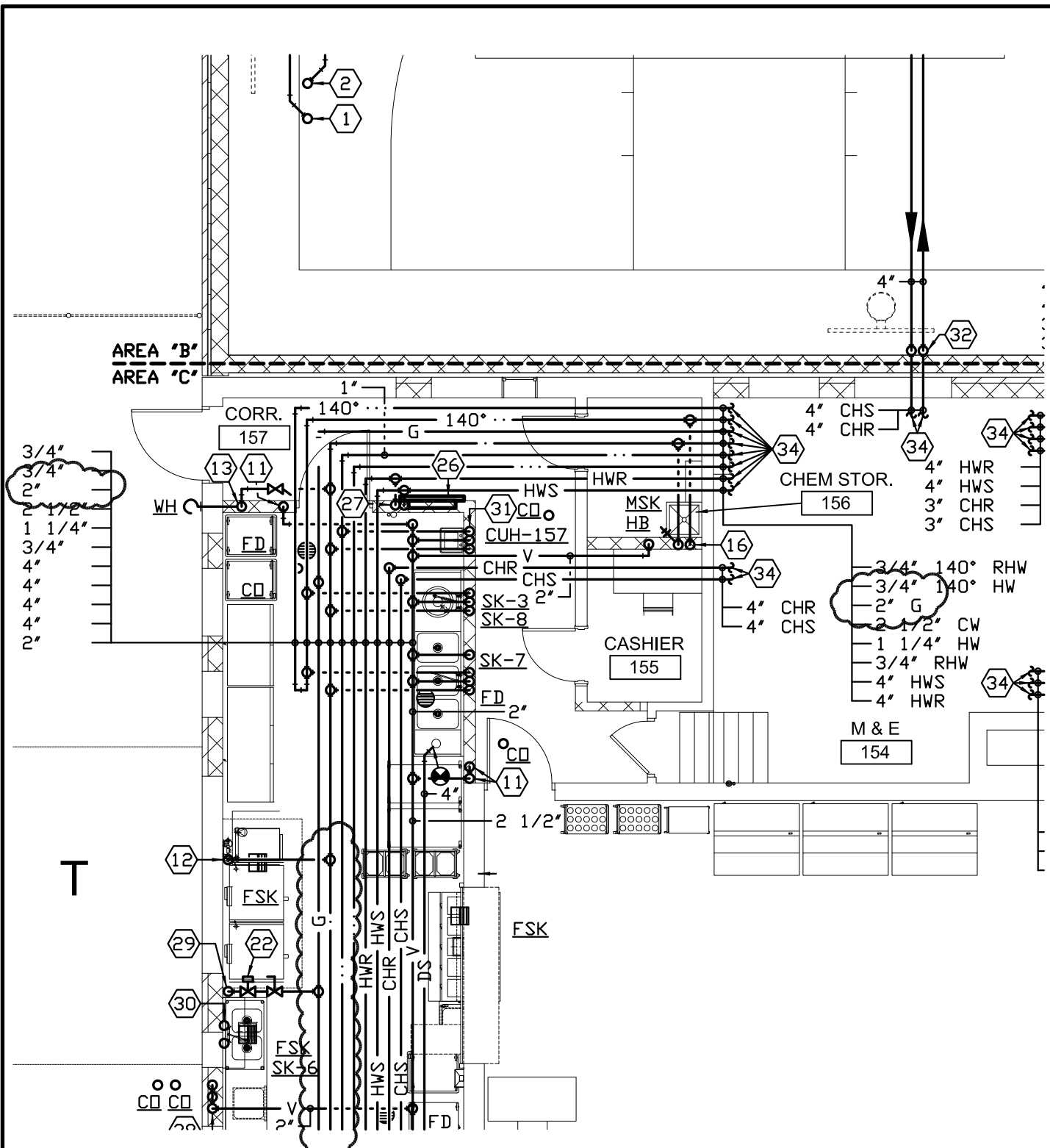
SUBSTITUTIONS AND PRODUCT OPTIONS

The following material or equipment furnished by the manufacturers listed may be substituted as equal, providing that each item, material and piece of equipment conforms to the design and requirements of the Drawings and Project Manual.

SECTION	ITEM	MANUFACTURER
220400	Faucets & Flush Valves	Delta
220400	Lavatory	Willoughby
220400	Two-Station Washbasin – Sensor Operated	Acorn Engineering
220600	Radiant Ceiling Panels	Airtite TWA Panel Systems

220600	Calibrated Flow Control Valves	NuTech
220600	Automatic Flow Control Valves	NuTech
230800	AHU	Dunham-Bush
230800	Chiller	Dunham-Bush
230800	Roof Curbs	CDI
230800	Spiral Duct	Lindlab
		Lewis & Lambert
230800	Adjustable Variable Frequency Drives	Danfoss
230800	PRV	Aerovent
		Soler & Palau
		Twin City Fan
230800	Square Centrifugal In-Line Fan	Aerovent
		Soler & Palau
		Twin City Fan
230800	Ceiling In-Line Exhaust Fan	Soler & Palau
		Twin City Fan
230800	Combination Fire/Smoke Dampers	NCA Manufacturing
230800	Fire Dampers	NCA Manufacturing
230800	Louvers	NCA Manufacturing
		Air Balance
230800	Backdraft Relief Dampers	Acme
230800	PRV Backdraft Dampers	Aerovent
		Soler & Palau
230800	Counter Balanced Backdraft Dampers	Acme
		Air Balance
230800	Exhaust/Relief Hood	Acme
		Twin City Fan
230800	Outdoor Air Intake Hood	Acme
		Twin City Fan
230800	Kitchen Hood	Captive Aire
		EconAire
230800	Wall Canopy Hood	Captive Aire
230800	Fabric duct	KE Fibertec
		Fabric Air
		ADC (Air Distribution Concepts)

END OF ADDENDUM



FLOOR PLAN AREA "C"

- PLUMBING & HEATING

SCALE 0 4 8 12 16

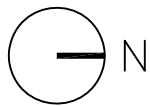
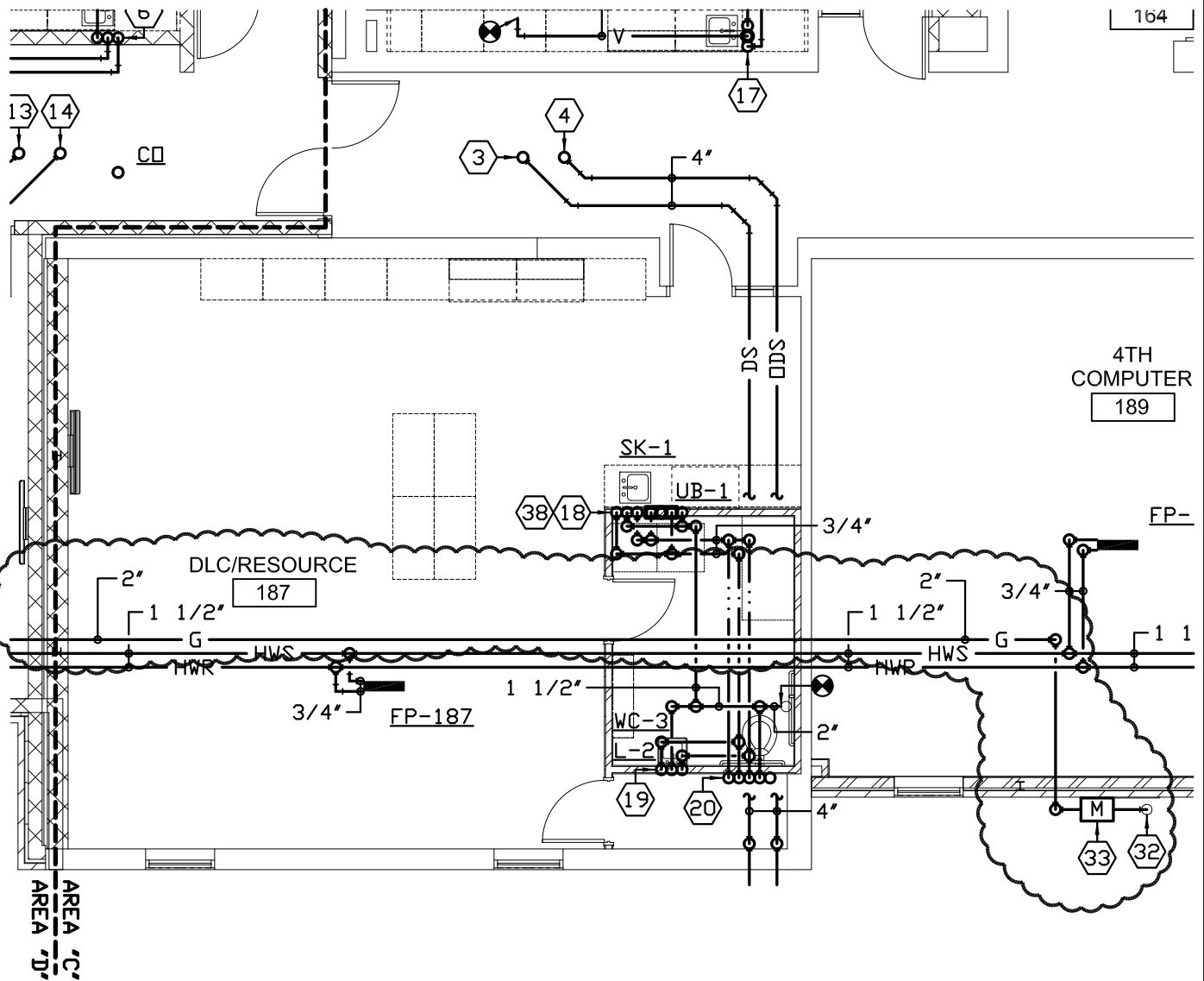


**Associated
Consulting
Engineering,
Incorporated**

PROJECT
**WASHINGTON ELEMENTARY
 ADDITION PHASE 2
 HURON, SOUTH DAKOTA**

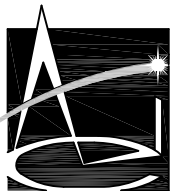
PROJECT NO.
113059
 DATE
3-18-14
 DRAWN BY
EJS

SHEET
RM3. 7
 2 OF 4



FLOOR PLAN AREA "C" - PLUMBING & HEATING

SCALE 0 4 8 12 16



**Associated
Consulting
Engineering,
Incorporated**

PROJECT

WASHINGTON ELEMENTARY
ADDITION PHASE 2
HURON, SOUTH DAKOTA

PROJECT NO.

113059

DATE

3-18-14

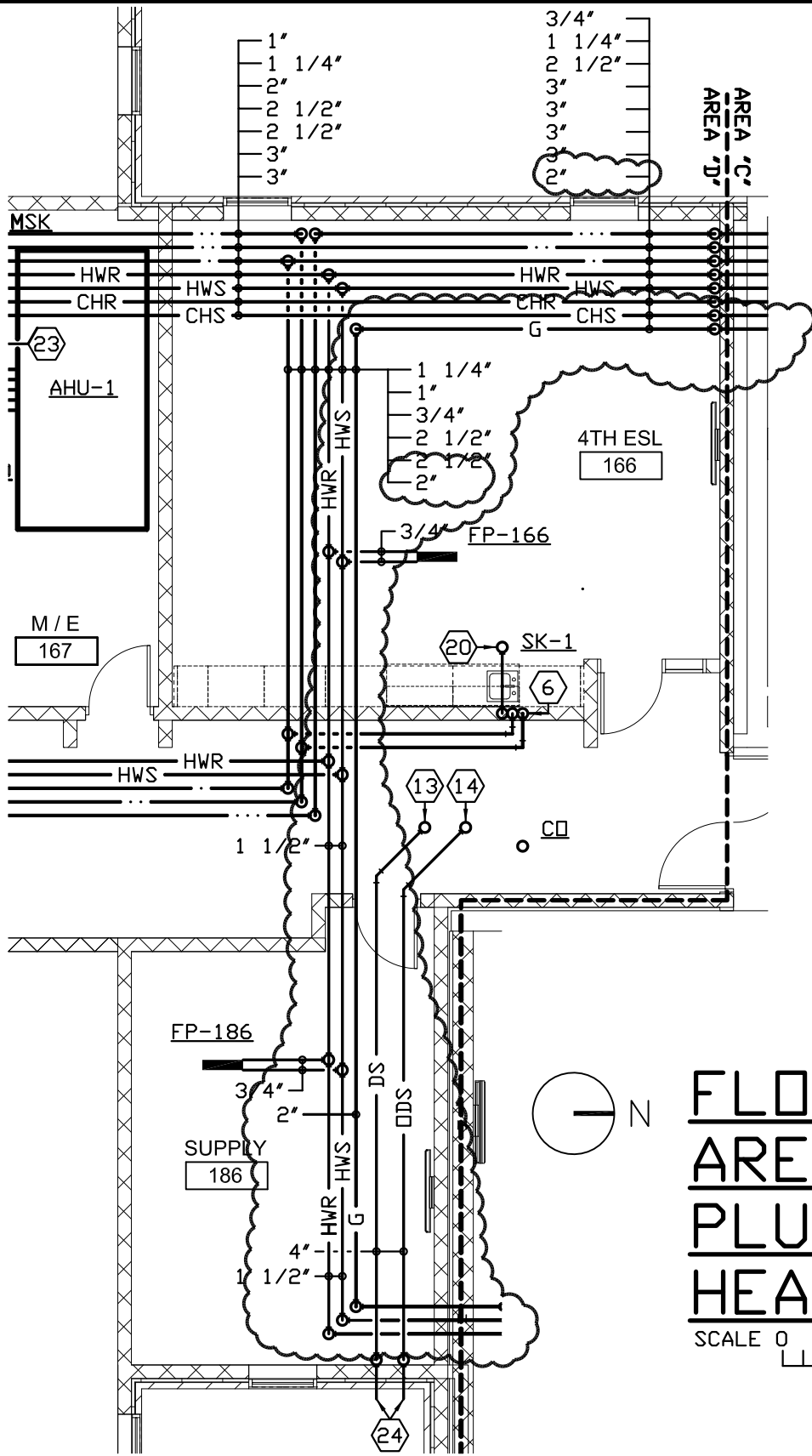
DRAWN BY

EJS

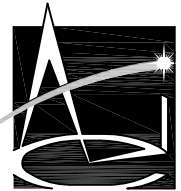
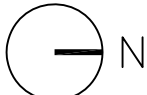
SHEET

RM3. 7

3 OF 4



FLOOR PLAN AREA "D" - PLUMBING & HEATING



**Associated
Consulting
Engineering,
Incorporated**

PROJECT
WASHINGTON ELEMENTARY
ADDITION PHASE 2
HURON, SOUTH DAKOTA

PROJECT NO.
113059
DATE
3-18-14
DRAWN BY
EJS

SHEET
RM3. 8
4 OF 4

ADDENDUM E2

MADISON ELEMENTARY SCHOOL
EXPANSION & RENOVATION
HURON SOUTH DAKOTA

DATE: March 18, 2014

Associated Consulting Engineering, Inc.
340 South Phillips Avenue
Sioux Falls SD 57104-6910

SCOPE OF THIS ADDENDUM:

The following becomes a part of the original Drawings and Project Manual, taking precedence over those items that may conflict.

The Bidder shall note receipt and make acknowledgment of this addendum on the bid form, incorporating its provisions in their bid.

This addendum has been issued to all bidders and to all others to whom Drawings and Project Manuals have been issued by the office of the Architect/Engineer.

SPECIFICATION ITEMS:

SECTION 261200 – CONDUCTORS AND CABLES

1. Article 2.4: The heat trace controller shall be provided with a remote RTD sensor for sensing ambient temperature (turn on the heat trace when the ambient temperature is below 33°F).

SECTION 264420 – PANELBOARDS

1. Delete article 2.7.

SECTION 277400 – COMMUNICATIONS AND DATA-PROCESSING EQUIPMENT

1. For clarification, the voice backbone cables shall be terminated on patch panels.

DRAWINGS ITEMS:

DRAWING SHEET E3.1

FLOOR PLAN AREA “A” – POWER & SIGNAL

1. Room 110: Provide rough-in for card reader and door release at the exterior door (door 110A).

DRAWING SHEET E3.3

FLOOR PLAN AREA “B” – POWER & SIGNAL

1. Room 139: Electrical note #35 shall be applied to the data processing equipment IDF location.
2. Room 154: Electrical note #41 shall be applied to the devices at the west end of the south wall.

DRAWING SHEET E3.3

PENTHOUSE PLAN - AREA “B” – POWER & SIGNAL

1. FP-147A (equipment tag #14) shall be fed from panel “B1” in lieu of panel “B3”.
2. FP-147B (equipment tag #15) shall be fed from panel “B1” in lieu of panel “B3”.
3. General Note “D”: Replace reference to panel “B2” with panel “B1”.

DRAWING SHEET E4.1
SCHEDULES AND DETAILS

1. Power Riser Notes, Note #1: The new circuit breaker shall have an AIC rating of 42,000A in lieu of 65,000A.
2. Power Riser Notes, Note #2: The new circuit breaker shall not be required to be 100% rated and shall have an AIC rating of 42,000A in lieu of 65,000A.

DRAWING SHEET E4.2
SCHEDULES

1. Panel “B1”: Provide two each 20A/2P circuit breakers for FP-147A and FP-147B.
2. Panel “B2” shall have a minimum AIC rating of 10,000A.
3. Panel “B3”: FP147A and FP-147B shall be fed from panel “B1” in lieu of this panel. Provide 20A/1P circuit breakers in circuits 25, 26, 27, and 28.

SUBSTITUTIONS AND PRODUCT OPTIONS

The following material or equipment furnished by the manufacturers listed may be substituted as equal, providing that each item, material and piece of equipment conforms to the design and requirements of the Drawings and Project Manual.

SECTION	ITEM	MANUFACTURER
265110	Interior Lighting Type E2 Type E4	Emergi-Lite Emergi-Lite

END OF ADDENDUM

ADDENDUM E2

WASHINGTON ELEMENTARY SCHOOL
EXPANSION & RENOVATION
HURON SOUTH DAKOTA

DATE: March 18, 2014

Associated Consulting Engineering, Inc.
340 South Phillips Avenue
Sioux Falls SD 57104-6910

SCOPE OF THIS ADDENDUM:

The following becomes a part of the original Drawings and Project Manual, taking precedence over those items that may conflict.

The Bidder shall note receipt and make acknowledgment of this addendum on the bid form, incorporating its provisions in their bid.

This addendum has been issued to all bidders and to all others to whom Drawings and Project Manuals have been issued by the office of the Architect/Engineer.

SPECIFICATION ITEMS:

SECTION 261200 – CONDUCTORS AND CABLES

1. Article 2.4: The heat trace controller shall be provided with a remote RTD sensor for sensing ambient temperature (turn on the heat trace when the ambient temperature is below 33°F).

SECTION 277400 – COMMUNICATIONS AND DATA-PROCESSING EQUIPMENT

1. For clarification, the voice backbone cables shall be terminated on patch panels.

DRAWINGS ITEMS:

DRAWING SHEET E1.1

SITE PLAN – ELECTRICAL

1. Under the base bid, four type “AA” site lighting units for the north parking lot shall not be provided, however raceways shall be stubbed out of the building as required to accommodate future installation of the lighting units. Under alternate 1W, the type “AA” site lighting units shall be provided as shown on the drawing.

DRAWING SHEETS E3.1 AND E3.3

FLOOR PLAN AREAS “A” AND “B” – LIGHTING

1. Under the base bid, a total of 5 each type “Y” luminaires shall be provided on the north side of the building (evenly spaced at locations as determined by the A/E) in lieu of a total of 3 each. Under alternate 1W a total of 3 luminaires shall be provided on the north side of the building as shown on the plans.

DRAWING SHEET E4.1

SCHEDULES AND DETAILS

1. Power Riser Diagram: The available fault current at main distribution panel “MDP” is 54,600A.

DRAWING SHEET E4.2
SCHEDULES

1. Panel “A1” shall have a minimum AIC rating of 10,000A.
2. Panel “C2” shall have a minimum AIC rating of 10,000A.

SUBSTITUTIONS AND PRODUCT OPTIONS

The following material or equipment furnished by the manufacturers listed may be substituted as equal, providing that each item, material and piece of equipment conforms to the design and requirements of the Drawings and Project Manual.

SECTION	ITEM	MANUFACTURER
265110	Interior Lighting Type E2 Type E4	Emergi-Lite Emergi-Lite

END OF ADDENDUM