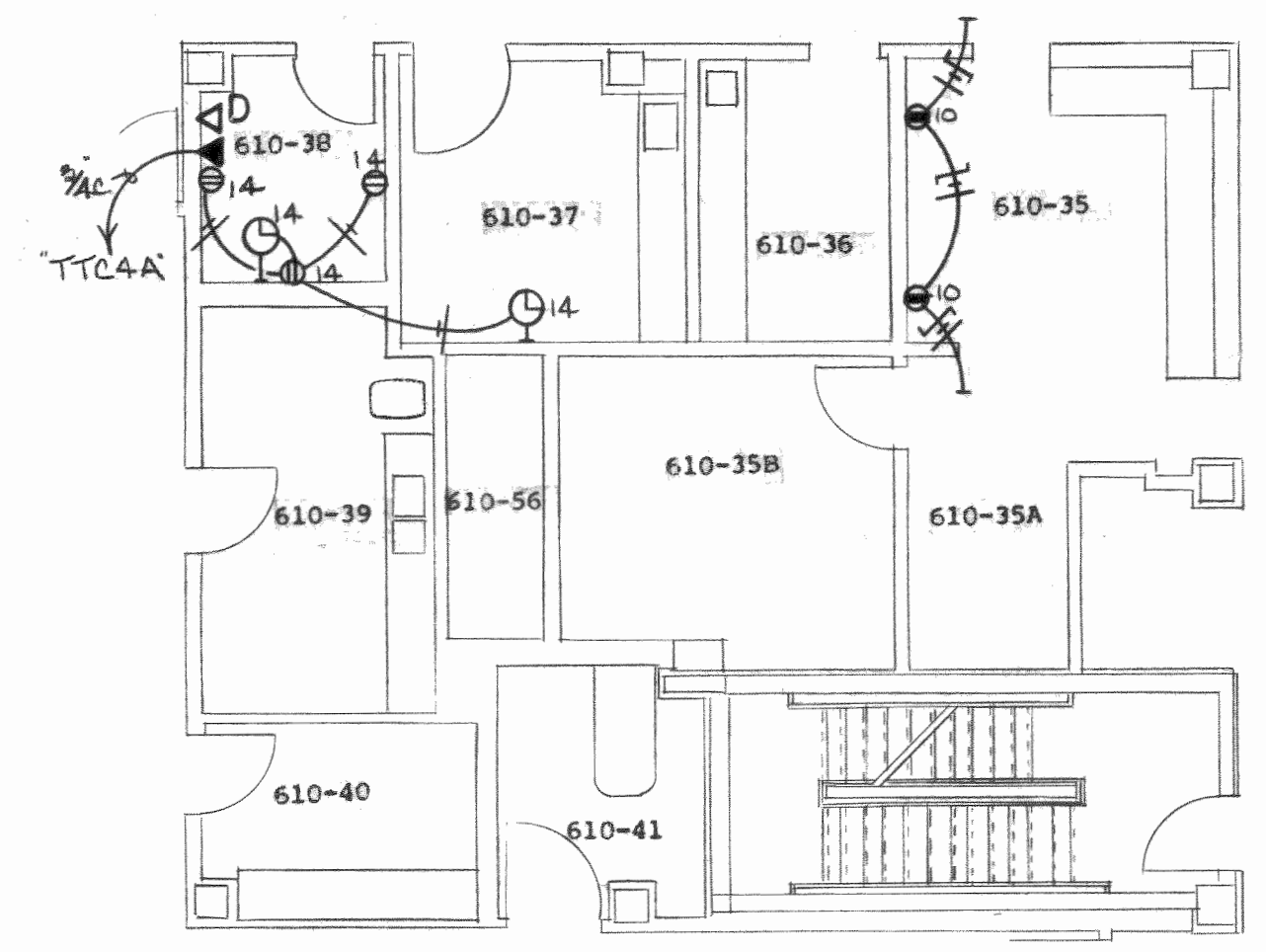
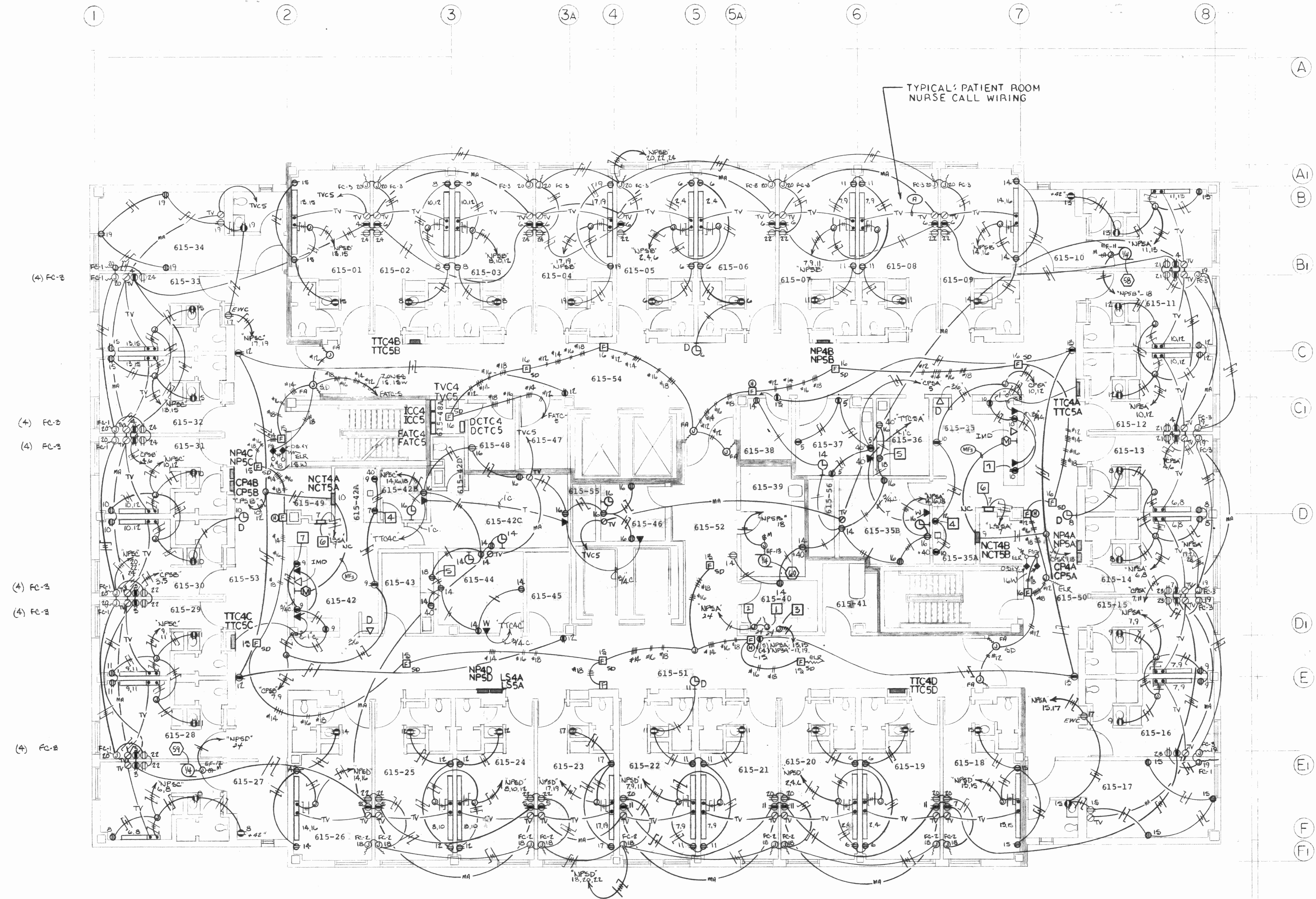


ISSUED: 4-15-80  
 DRAWN BY: JB  
 CHECKED BY: (Signature)  
 REVISED:



PARTIAL 4<sup>TH</sup> FLOOR PLAN  
 SCALE: 1/8" = 1'-0"



TYPICAL PATIENT ROOM  
 NURSE CALL WIRING

- NOTES:
- Ice Machine connection at 57.6" A.F.F., 6.0 Amp, 120/1.
  - Ice Machine connection at 13" A.F.F. for Bin Supply.
  - Nourishment Station connection to Terminal Panel, 35 Amp at 208/1 via 50/2, 1/4" c. w/36 (THHN) wire.
  - Undercounter refrigerator.
  - Refrigerator.
  - Medical Gas Area Alarm.
  - Typical: Devices to be mounted within casework, verify the exact locations within the casework shop drawings and the Architect before rough-in.

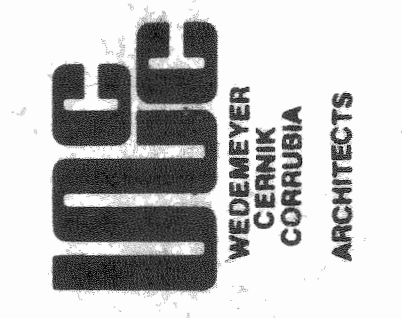
MANUAL NURSE CALL SYSTEM WIRING AND CONDUIT SCHEDULE

- A = Belden No. 8444
- B = Sylvania No. 2314
- E = Sylvania No. 2316
- F = Sylvania No. 4126
- R = Sylvania No. 2315
- N = Sylvania No. 2317

- - 1/2" conduit
- - 3/4" conduit
- - 1/2" conduit
- - 3/4" conduit
- - 1" conduit
- - 1" conduit
- - 1-1/4" conduit

FIFTH FLOOR POWER  
 SCALE: 1/8" = 1'-0"

FOURTH FLOOR POWER TYPICAL AS NOTED



THE WARNER ASSOCIATES  
 HEALTH CARE CONSULTANTS  
 JACK B. DEAN, REGISTERED PROFESSIONAL ENGINEER  
 ALPER ASSOCIATES INC.  
 STRUCTURAL ENGINEER  
 CIVIL ENGINEER  
 EARL L. MEYER & ASSOCIATES  
 REGISTERED PROFESSIONAL ENGINEER  
 CODE CONSULTANT  
 SPECTRUM CONSTRUCTION CO.  
 SCHEDULE CONSTRUCTION MANAGER



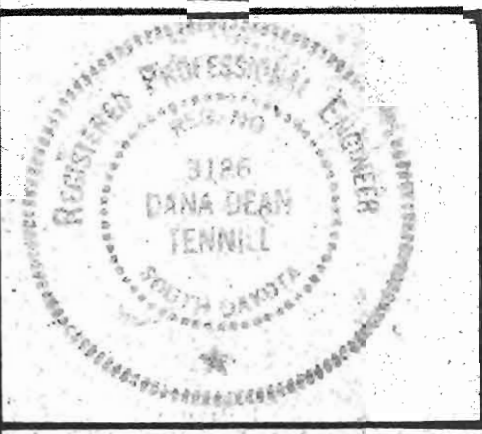
**SACRED HEART HOSPITAL**  
**PROPOSED NEW FACILITY &**  
**RENOVATION OF SHARED SPACE**  
 YANKTON, SOUTH DAKOTA

SHEET DESCRIPTION

SHEET NUMBER

**E13**





ISSUED: 12/15/1990  
 DRAWN BY: JKT  
 CHECKED BY: JKT  
 REVISED:

ISOMETRIC OF FIRE PROTECTION RISER  
 NOT TO SCALE

- 001-09A Corridor
- 001-10 Corridor
- ICU/CCU 640
- 640-01 Nurse Station
- 640-02 Office
- 640-03 Female Locker
- 640-04 J.C.
- 640-05 Private Unit
- 640-06 Private Unit
- 640-07 Private Unit
- 640-08 Conference
- 640-09 Private Unit
- 640-10 Private Unit
- 640-11 Semi-Private Unit
- 640-12 Private Unit
- 640-13 Waiting
- 640-14 Male Locker
- 640-14A Toilet
- 640-15 Clean Utility
- 640-16 Soiled Utility
- 640-17 Equipment Storage
- 640-18 Corridor
- 640-19 Corridor
- 640-20 Corridor
- 640-20B Vestibule
- 640-21 On Call
- 640-21A Bath
- Surgery/Recovery/Anesth. 660
- 660-01 Control
- 660-02 Office
- 660-03 Dressing
- 660-04 Waiting
- 660-05 Holding
- 660-06 House Keeping
- 660-07 Clean Up
- 660-07A Clean Up
- 660-08 Workroom
- 660-09 Anesth
- 660-10 Sterile Storage
- 660-11 J.C.
- 660-12 Physicians Lounge
- 660-13 Storage
- 660-14 Conference
- 660-15 Female Locker
- 660-15A Toilet/Shower
- 660-16 Cart Lift
- 660-17 General O.R.
- 660-18 Orthopedic
- 660-19 Darkroom
- 660-20 Mex. Area
- 660-21 Urology
- 660-22 Induction
- 660-23 E.E.N.T.
- 660-24 General O.R.
- 660-25 Major O.R.
- 660-26 Conference
- 660-27 Male Locker
- 660-27A Toilet/Shower
- 660-32 Grey Corridor
- 660-32A Vestibule
- 660-33 Grey Corridor
- 660-34 Grey Corridor
- 660-36 White Corridor
- 660-38 White Corridor
- 665-28 Recovery
- 665-28A C.U.
- 665-28B S.U.
- 665-29 Isolation
- Emergency 678
- 678-01 Nurse Station
- 678-02 Office
- 678-04 Vestibule
- 678-04A Outer Vest.
- 678-05 Shower
- 678-06 Waiting
- 678-07 Toilet
- 678-08 Lounge
- 678-08A Toilet
- 678-09 Treatment
- 678-10 Clean Utilities
- 678-11 Soiled Utilities
- 678-12 Cast Room
- 678-13 Toilet
- 678-14 J.C.
- 678-15 Scope Room
- 678-16 Treatment
- 678-16A Treatment
- 678-17 Corridor
- Radiology & Nuclear Med. 720
- 720-01 Office
- 720-02 Dressing
- 720-02A Toilet
- 720-02B Toilet
- 720-02C Dressing
- 720-03 Conference
- 720-04 Clean
- 720-05 J.C.
- 720-06 Therapy
- 720-07 Nuclear Med.
- 720-07A Mex Room
- 720-08 Radiologist
- 720-14 Specials
- 720-14A Toilet
- 720-15 Toilet
- 720-16 Staff
- 720-17 Dark Room
- 720-18 Tomography
- 720-19 Soiled Utility
- 720-20 Head & Chest
- 720-21 Radiology
- 720-22 Fluoroscopy
- 720-22A Toilet
- 720-23 Storage
- 720-24 Elect.
- 720-24A Waiting
- 720-24B Storage
- 720-25 Quality Control
- 720-25A Toilet
- 720-26A Corridor
- 720-27 Corridor
- 950-03 Switchboard
- 950-20 Conference
- 950-21 Gen. Purpose Ed.
- 950-21A Gen. Purpose Ed.



THE WARNER ASSOCIATES  
 HEALTH CARE CONSULTANTS  
 JACK R. TENNILL & ASSOCIATES INC.  
 ALPHE ASSOCIATES INC.  
 STRUCTURAL ENGINEER  
 CIVIL ENGINEER  
 EARL L. MEYER & ASSOCIATES  
 EQUIPMENT CONSULTANT  
 CONSTRUCTION CODE CONSULTANT  
 HERCULES CONSTRUCTION CO.  
 CONSTRUCTION MANAGER

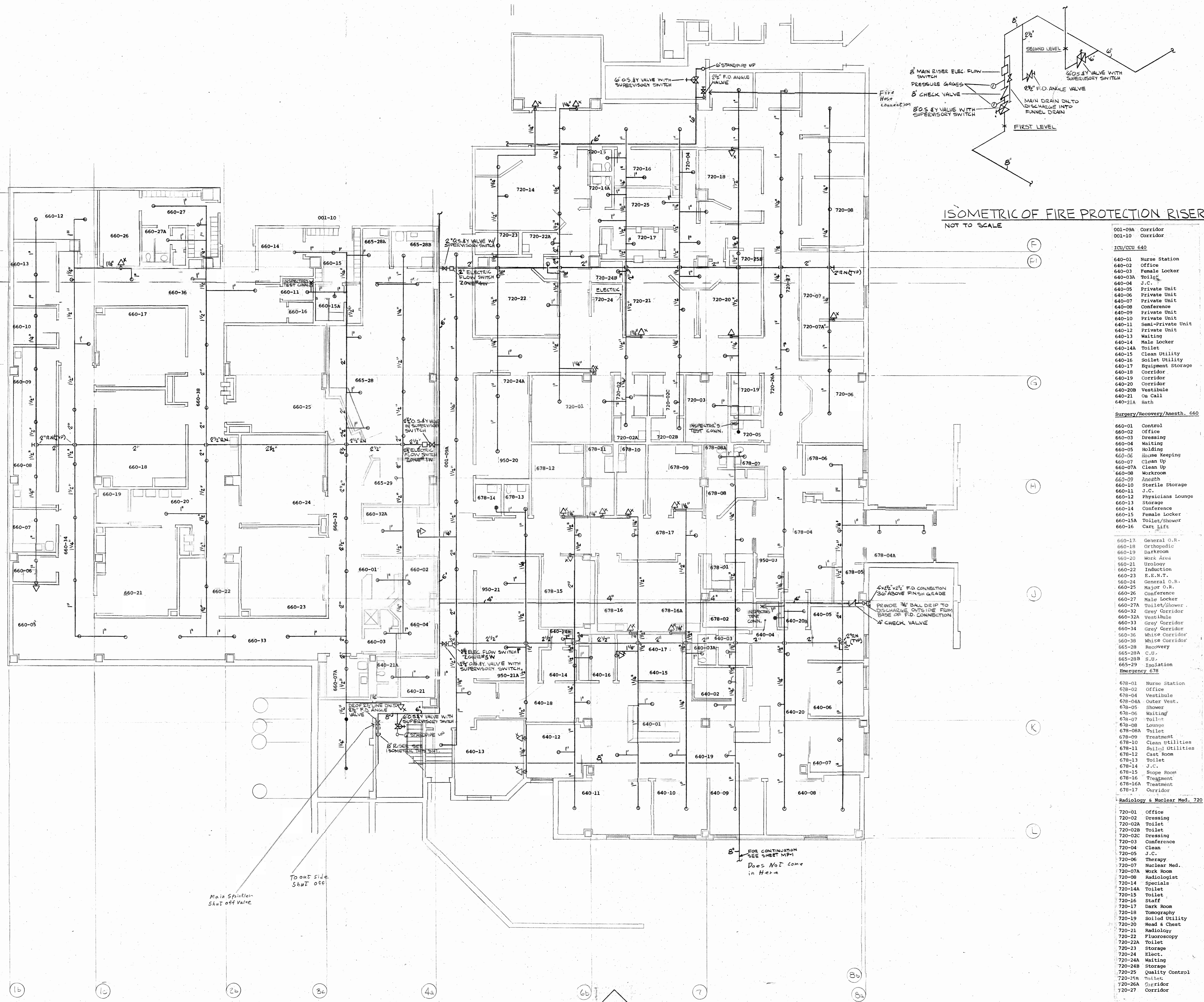


**SACRED HEART HOSPITAL**  
**PROPOSED NEW FACILITY &**  
**RENOVATION OF SHARED SPACE**  
**YANKTON, SOUTH DAKOTA**

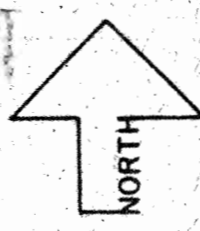
SHEET DESCRIPTION  
 LEVEL ONE SOUTH  
 FIRE PROTECTION PLAN

SHEET NUMBER

**FP 3**

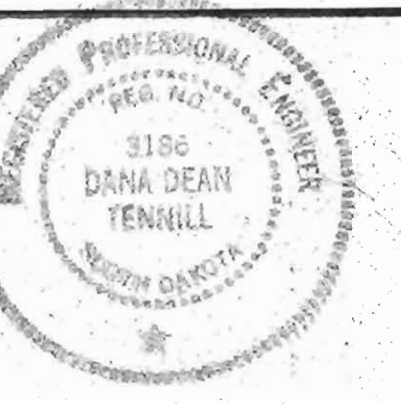


LEVEL ONE SOUTH FLOOR PLAN  
 SCALE: 1/8" = 1'-0"









ISSUED: APRIL 15, 1980  
 DRAWN BY: DDT  
 CHECKED BY: JRT  
 REVISED:

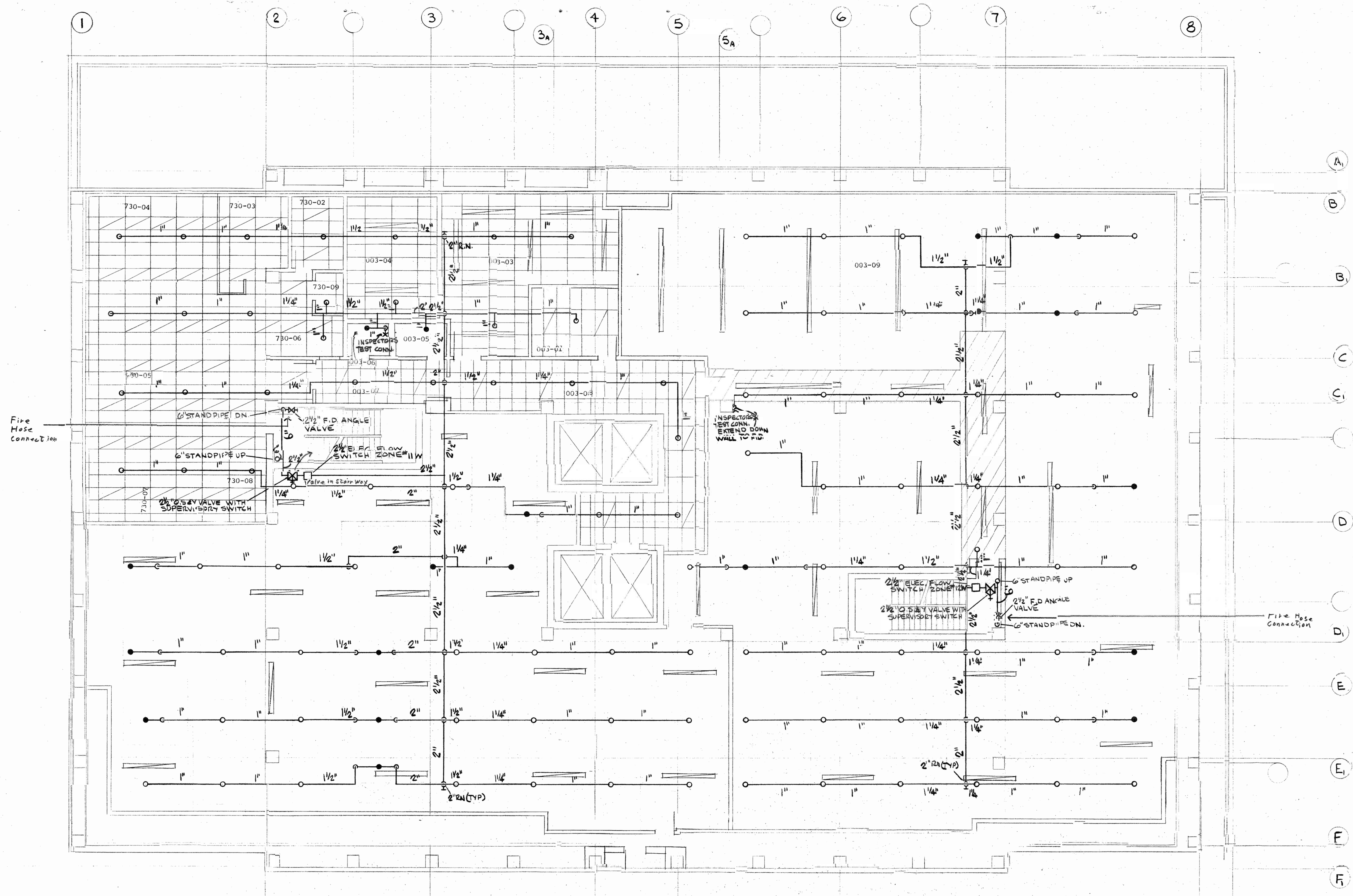


THE WARNER ASSOCIATES  
 HEALTH CARE CONSULTANTS  
 CONSULTING ENGINEER  
 ALPER ASSOCIATES INC.  
 STRUCTURAL ENGINEER  
 CIVIL ENGINEER  
 EARL L. MEYER & ASSOCIATES  
 ELECTRICAL ENGINEER  
 CODE CONSULTANTS, INC.  
 CONSULTANTS  
 CONSTRUCTION CO. MANAGER

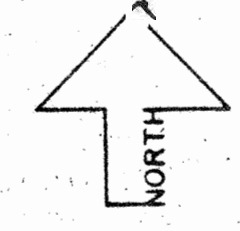


Spectrum Development Corporation

**SACRED HEART HOSPITAL**  
**PROPOSED NEW FACILITY &**  
**RENOVATION OF SHARED SPACE**  
 YANKTON, SOUTH DAKOTA



LEVEL THREE FIRE PROTECTION PLAN  
 SCALE 1/8" = 1'-0"



- 003-01 Housekeeping
  - 003-02 Electric Shop
  - 003-03 Telephone Equip.
  - 003-04 H.C. Toilet
  - 003-05 J.C.
  - 003-06 Corridor
  - 003-07 Corridor
  - 003-08 Corridor
  - 003-09 Mechanical
- 
- 730-02 Office
  - 730-03 Admixtures
  - 730-04 Active Storage Unit
  - 730-05 Clerical
  - 730-06 Dispensing
  - 730-07 Bulk Storage
  - 730-08 Receiving
  - 730-09 Vault

SHEET DESCRIPTION  
 LEVEL THREE  
 FIRE PROTECTION PLAN

SHEET NUMBER





ISSUED: APRIL 15, 1980  
 DRAWN BY: DPT  
 CHECKED BY: JRT  
 REVISED:



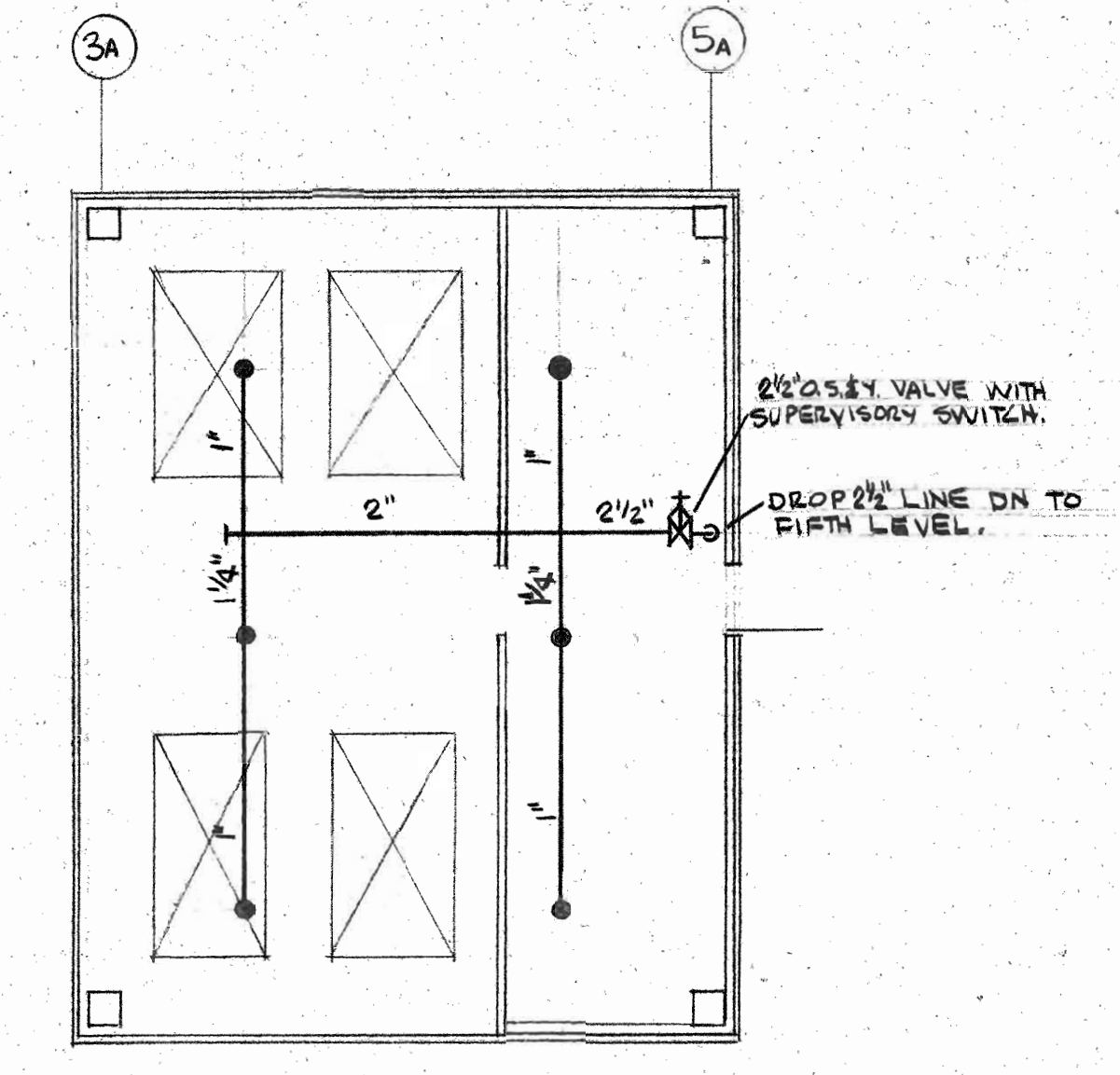
THE WARNER ASSOCIATES  
 HEALTH CARE CONSULTANTS  
 CONSULTING ENGINEERS  
 ALFA ASSOCIATES, INC.  
 STRUCTURAL ENGINEER  
 CIVIL ENGINEER, INC.  
 EARL L. MEYER & ASSOCIATES  
 CONSULTANTS, INC.  
 CODE CONSULTANT  
 STRUCTURAL CONSULTANT  
 CONSTRUCTION MANAGER



# SACRED HEART HOSPITAL PROPOSED NEW FACILITY & RENOVATION OF SHARED SPACE YANKTON, SOUTH DAKOTA

SHEET DESCRIPTION  
 LEVEL FOUR & FIVE  
 FIRE PROTECTION PLAN

SHEET NUMBER  
**FP 7**

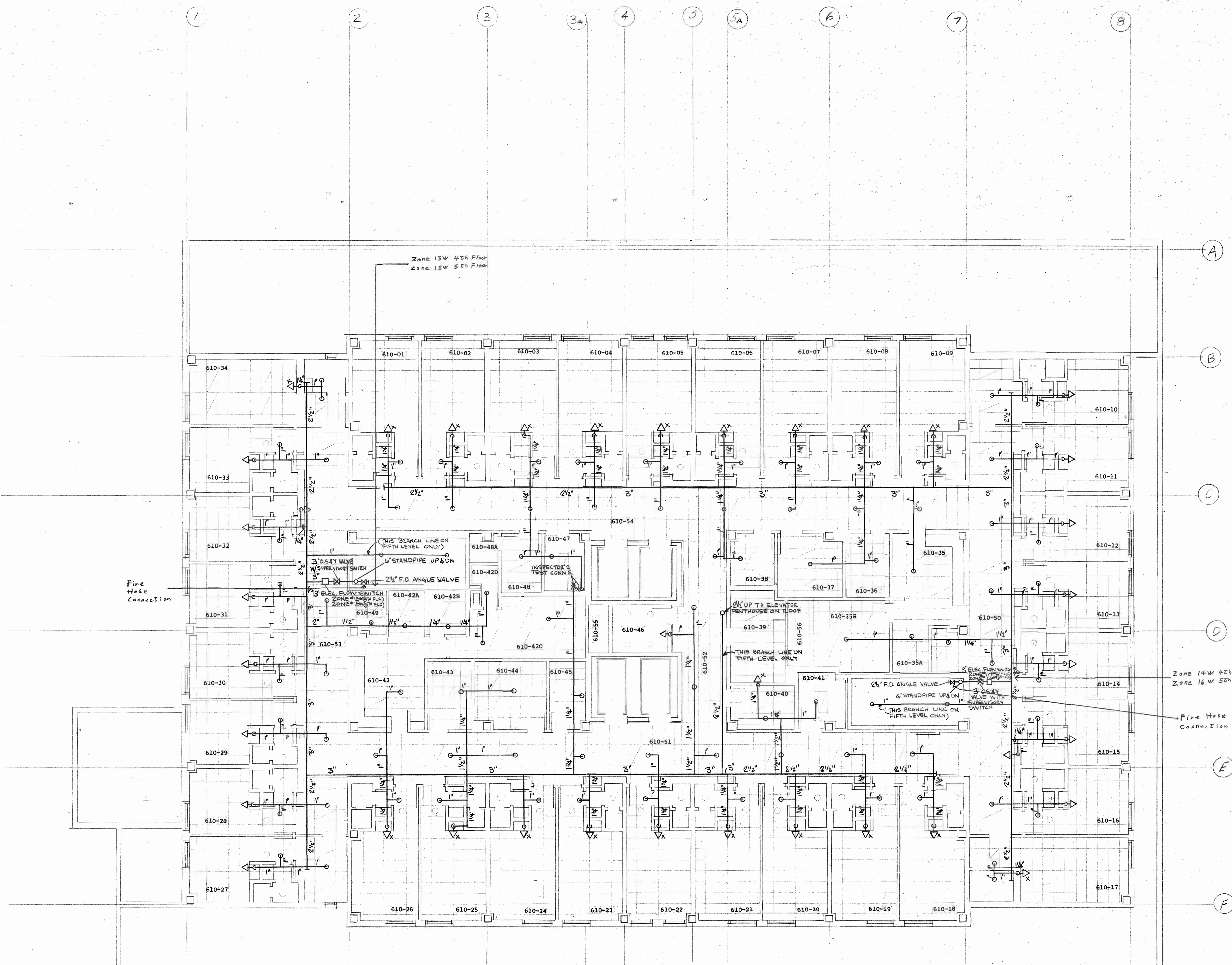


**ELEVATOR PENTHOUSE**  
 SCALE 1/8" = 1'-0"

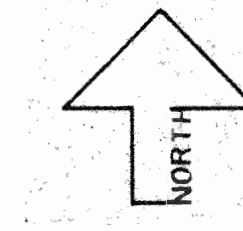
4th & 5th Floor Are Typical

|         |                |         |                |
|---------|----------------|---------|----------------|
| 610-01  | Semi-Private   | 615-01  | Semi-Private   |
| 610-02  | Semi-Private   | 615-02  | Semi-Private   |
| 610-03  | Semi-Private   | 615-03  | Semi-Private   |
| 610-04  | Semi-Private   | 615-04  | Semi-Private   |
| 610-05  | Semi-Private   | 615-05  | Semi-Private   |
| 610-06  | Semi-Private   | 615-06  | Semi-Private   |
| 610-07  | Semi-Private   | 615-07  | Semi-Private   |
| 610-08  | Semi-Private   | 615-08  | Semi-Private   |
| 610-09  | Semi-Private   | 615-09  | Semi-Private   |
| 610-10  | Isolation      | 615-10  | Isolation      |
| 610-11  | CCSD           | 615-11  | CCSD           |
| 610-12  | CCSD           | 615-12  | CCSD           |
| 610-13  | CCSD           | 615-13  | CCSD           |
| 610-14  | CCSD           | 615-14  | CCSD           |
| 610-15  | Private        | 615-15  | Private        |
| 610-16  | Private        | 615-16  | Private        |
| 610-17  | Day Room       | 615-17  | Day Room       |
| 610-18  | Semi-Private   | 615-18  | Semi-Private   |
| 610-19  | Semi-Private   | 615-19  | Semi-Private   |
| 610-20  | Semi-Private   | 615-20  | Semi-Private   |
| 610-21  | Semi-Private   | 615-21  | Semi-Private   |
| 610-22  | Semi-Private   | 615-22  | Semi-Private   |
| 610-23  | Semi-Private   | 615-23  | Semi-Private   |
| 610-24  | Semi-Private   | 615-24  | Semi-Private   |
| 610-25  | Semi-Private   | 615-25  | Semi-Private   |
| 610-26  | Semi-Private   | 615-26  | Semi-Private   |
| 610-27  | Isolation      | 615-27  | Isolation      |
| 610-28  | Private        | 615-28  | Private        |
| 610-29  | Security       | 615-29  | Security       |
| 610-30  | Private        | 615-30  | Private        |
| 610-31  | Private        | 615-31  | Private        |
| 610-32  | Private        | 615-32  | Private        |
| 610-33  | Private        | 615-33  | Private        |
| 610-34  | Day Room       | 615-34  | Day Room       |
| 610-35  | Nurse Station  | 615-35  | Nurse Station  |
| 610-35A | Medication     | 615-35A | Medication     |
| 610-35B | Conference     | 615-35B | Conference     |
| 610-36  | Clean Utility  | 615-36  | Clean Utility  |
| 610-37  | Treatment      | 615-37  | Treatment      |
| 610-38  | Dictation      | 615-38  | Dictation      |
| 610-39  | Soiled Utility | 615-39  | Soiled Utility |
| 610-40  | Nourishment    | 615-40  | Nourishment    |
| 610-41  | Bath           | 615-41  | Bath           |
| 610-42  | Nurse Station  | 615-42  | Nurse Station  |
| 610-42A | Medication     | 615-42A | Medication     |
| 610-42B | Office         | 615-42B | Office         |
| 610-42C | Lounge         | 615-42C | Lounge         |
| 610-42D | Toilet         | 615-42D | Toilet         |
| 610-43  | Clean Utility  | 615-43  | Clean Utility  |
| 610-44  | Conference     | 615-44  | Conference     |
| 610-45  | Storage        | 615-45  | Storage        |
| 610-46  | Grieving       | 615-46  | Grieving       |
| 610-47  | Bath           | 615-47  | Bath           |
| 610-48  | Housekeeping   | 615-48  | Housekeeping   |
| 610-48A | Electrical     | 615-48A | Electrical     |
| 610-49  | Corridor       | 615-49  | Corridor       |
| 610-50  | Corridor       | 615-50  | Corridor       |
| 610-51  | Corridor       | 615-51  | Corridor       |
| 610-52  | Corridor       | 615-52  | Corridor       |
| 610-53  | Corridor       | 615-53  | Corridor       |
| 610-54  | Mechanical     | 615-54  | Mechanical     |
| 610-55  | Mechanical     | 615-55  | Mechanical     |
| 610-56  | Mechanical     | 615-56  | Mechanical     |

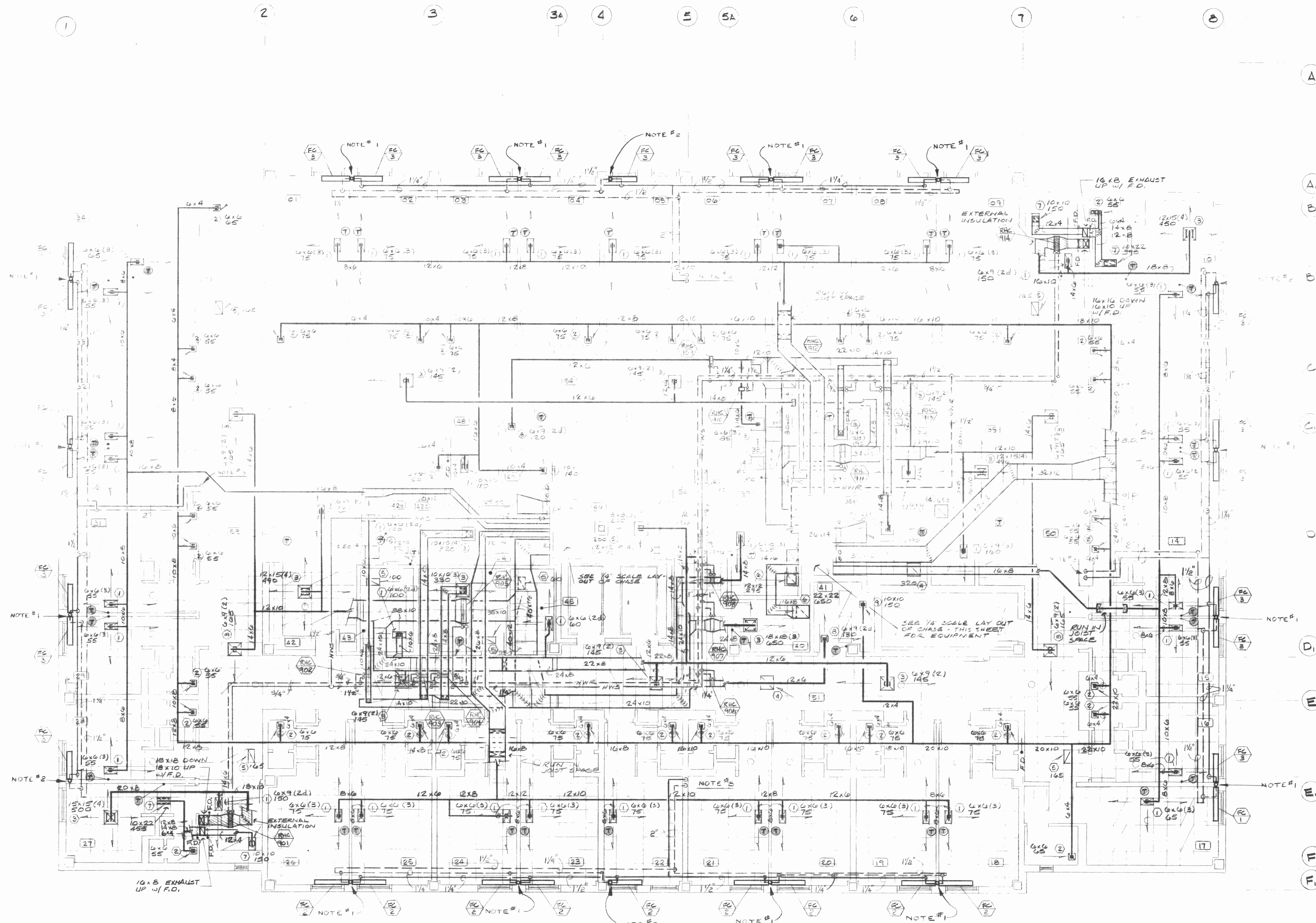
NOTE:  
 ROOM NUMBERS SHOWN ARE  
 FOURTH FLOOR.



**LEVELS FOUR & FIVE FLOOR PLAN**  
 SCALE: 1/8" = 1'-0"



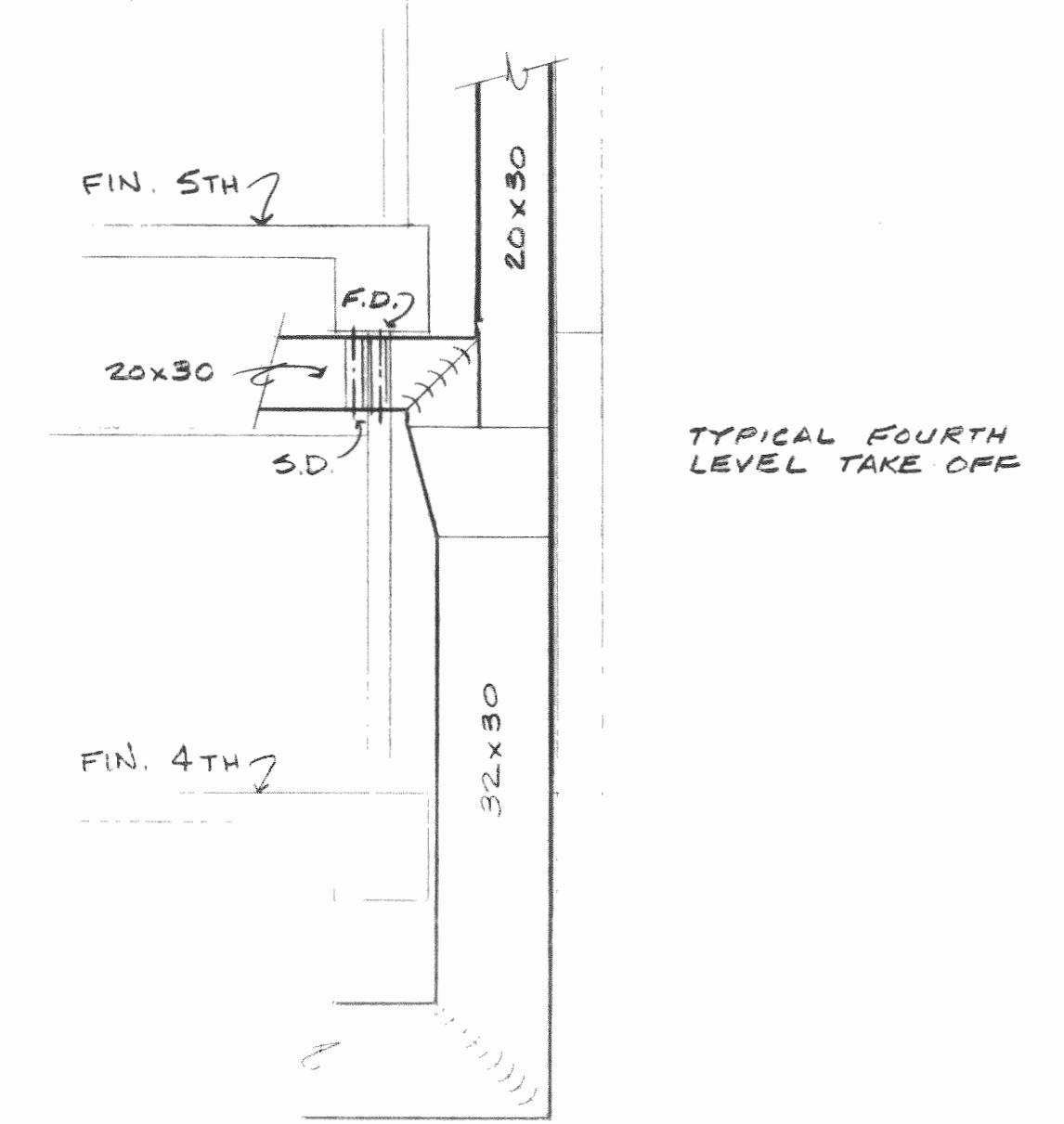
- 610-01 Semi-Private
- 610-02 Semi-Private
- 610-03 Semi-Private
- 610-04 Semi-Private
- 610-05 Semi-Private
- 610-06 Semi-Private
- 610-07 Semi-Private
- 610-08 Semi-Private
- 610-09 Semi-Private
- 610-10 Isolation
- 610-11 CCSD
- 610-12 CCSD
- 610-13 CCSD
- 610-14 CCSD
- 610-15 Private
- 610-16 Private
- 610-17 Day Room
- 610-18 Semi-Private
- 610-19 Semi-Private
- 610-20 Semi-Private
- 610-21 Semi-Private
- 610-22 Semi-Private
- 610-23 Semi-Private
- 610-24 Semi-Private
- 610-25 Semi-Private
- 610-26 Semi-Private
- 610-27 Isolation
- 610-28 Private
- 610-29 Sparsity
- 610-30 Private
- 610-31 Private
- 610-32 Private
- 610-33 Private
- 610-34 Day Room
- 610-35 Nurse Station
- 610-35A Medication
- 610-35B Conference
- 610-36 Clean Utility
- 610-37 Treatment
- 610-38 Dictation
- 610-39 Soiled Utility
- 610-40 Nourishment
- 610-41 Bath
- 610-42 Nurse Station
- 610-42A Medication
- 610-42B Office
- 610-42C Lounge
- 610-42D Toilet
- 610-43 Clean Utility
- 610-44 Conference
- 610-45 Storage
- 610-46 Grieving
- 610-47 Bath
- 610-48 Housekeeping
- 610-48A Electrical
- 610-49 Corridor
- 610-50 Corridor
- 610-51 Corridor
- 610-52 Corridor
- 610-53 Corridor
- 610-54 Corridor
- 610-55 Mechanical
- 610-56 Mechanical



FOURTH LEVEL PLAN - HVAC  
SCALE: 1/4" = 1'-0"

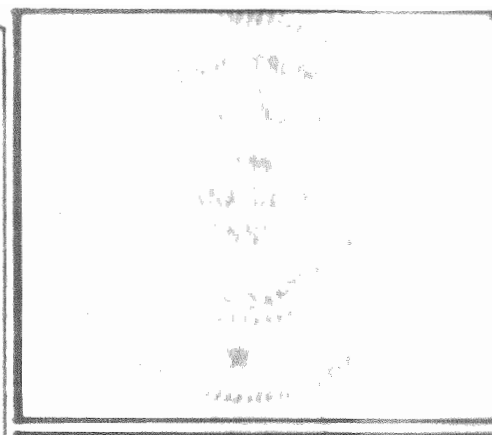
EAST EQUIPMENT CHASE  
1/4" = 1'-0"

WEST EQUIPMENT CHASE  
1/4" = 1'-0"



SECTION 1  
1/4" = 1'-0"

- PLAN NOTES
- 1/4" SUPPLY & RETURN RUNOUTS, 1" SUPPLY & RETURN UP THRU FLOOR (SEE FIFTH LEVEL PLAN), 1" SUPPLY & RETURN DOWN IN WALL TO FOURTH LEVEL FAN COILS. 3/4" DRAIN UP, 1" DRAIN DOWN (SEE THIRD LEVEL PLAN). SEE SLEEVE DETAIL - SHEET M-23.
  - 1" SUPPLY & RETURN RUNOUTS 3/4" SUPPLY & RETURN UP THRU FLOOR (SEE FIFTH LEVEL PLAN), 3/4" SUPPLY & RETURN DOWN IN WALL TO FOURTH LEVEL FAN COILS. 3/4" DRAIN UP & DOWN (SEE THIRD LEVEL PLAN). SEE SLEEVE DETAIL - SHEET M-23.
  - SUPPLY & RETURN FAN COIL PIPING DOWN THRU FLOOR, SEE THIRD LEVEL PLAN.



ISSUED: APR. 05  
DRAWN BY: JRT  
CHECKED BY: RLS  
REVISED:



THE WANNET ASSOCIATES  
HEALTH CARE CONSULTANTS  
JACK R. TENNILL & ASSOCIATES INC.  
ALPHEUS ASSOCIATES INC.  
STRUCTURAL ENGINEER  
CIVIL ENGINEER  
ELECTRICAL ENGINEER  
EARL L. MEYER & ASSOCIATES  
EQUIPMENT CONSULTANT  
CONSTRUCTION CODE CONSULTANT  
HERSCHEL CONSTRUCTION CO.  
CONSTRUCTION MANAGER



**SACRED HEART HOSPITAL**  
PROPOSED NEW FACILITY &  
RENOVATION OF SHARED SPACE  
YANKTON, SOUTH DAKOTA

SHEET DESCRIPTION  
LEVEL FOUR  
HVAC  
SHEET NUMBER

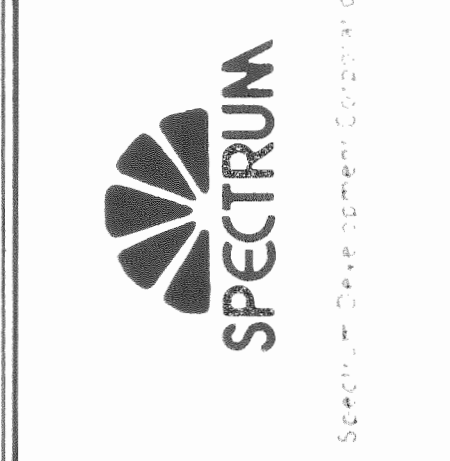
**M-17**

- 615-01 Semi-Private
- 615-02 Semi-Private
- 615-03 Semi-Private
- 615-04 Semi-Private
- 615-05 Semi-Private
- 615-06 Semi-Private
- 615-07 Semi-Private
- 615-08 Semi-Private
- 615-09 Semi-Private
- 615-10 Isolation
- 615-11 CCSD
- 615-12 CCSD
- 615-13 CCSD
- 615-14 CCSD
- 615-15 Private
- 615-16 Private
- 615-17 Day Room
- 615-18 Semi-Private
- 615-19 Semi-Private
- 615-20 Semi-Private
- 615-21 Semi-Private
- 615-22 Semi-Private
- 615-23 Semi-Private
- 615-24 Semi-Private
- 615-25 Semi-Private
- 615-26 Semi-Private
- 615-27 Isolation
- 615-28 Private
- 615-29 Security
- 615-30 Private
- 615-31 Private
- 615-32 Private
- 615-33 Private
- 615-34 Day Room
- 615-35 Nurse Station
- 615-35A Medication
- 615-35B Conference
- 615-36 Clean Utility
- 615-37 Treatment
- 615-38 Dictation
- 615-39 Soiled Utility
- 615-40 Nourishment
- 615-41 Bath
- 615-42 Nurse Station
- 615-42A Medication
- 615-42B Office
- 615-42C Lounge
- 615-42D Toilet
- 615-43 Clean Utility
- 615-44 Conference
- 615-45 Storage
- 615-46 Grieving
- 615-47 Bath
- 615-48 Housekeeping
- 615-48A Electrical
- 615-49 Corridor
- 615-50 Corridor
- 615-51 Corridor
- 615-52 Corridor
- 615-53 Corridor
- 615-54 Mechanical
- 615-55 Mechanical
- 615-56 Mechanical

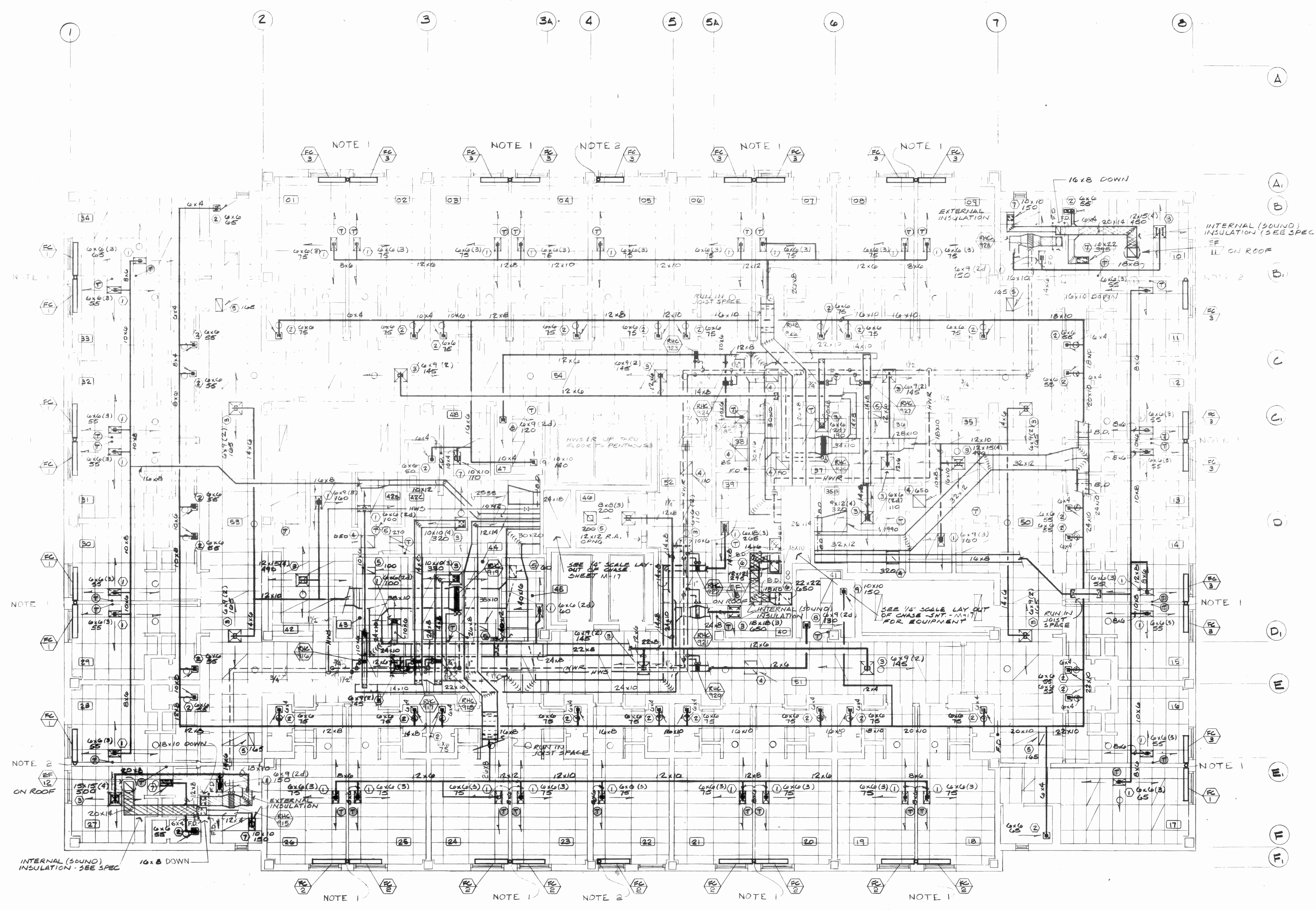
ISSUED APR. 5, 1980  
 DRAWN BY [Signature]  
 CHECKED BY [Signature]  
 REVISED:



THE WERNER ASSOCIATES  
 HEALTH CARE CONSULTANTS  
 JACK R. TENMILL & ASSOCIATES  
 STRUCTURAL ENGINEERS  
 ALPHER ASSOCIATES, INC.  
 CIVIL ENGINEERS  
 EARL L. MEYER & ASSOCIATES  
 EQUIPMENT CONSULTANTS  
 CODE CONSULTANTS  
 HERCULES CONSTRUCTION CO.  
 CONSTRUCTION MANAGER

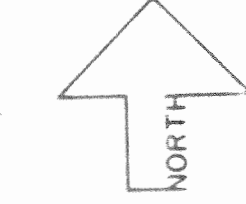


# SACRED HEART HOSPITAL PROPOSED NEW FACILITY & RENOVATION OF SHARED SPACE YANKTON, SOUTH DAKOTA



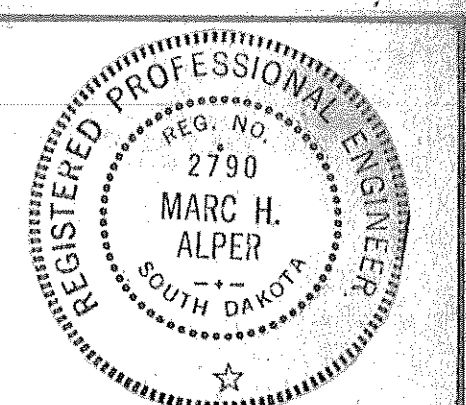
1. 1" SUPPLY, 1" RETURN, AND 3/4" DRAIN DOWN  
 SEE FOURTH LEVEL PLAN - SEE SLEEVE DETAIL SHEET M-23
2. 3/4" SUPPLY, 3/4" RETURN, AND 3/4" DRAIN DOWN  
 SEE FOURTH LEVEL PLAN - SEE SLEEVE DETAIL SHEET M-23

FIFTH LEVEL PLAN - HVAC  
 SCALE: 1/8" = 1'-0"

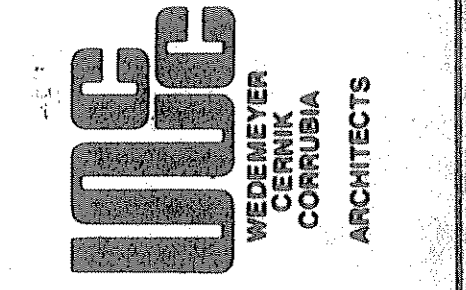


SHEET DESCRIPTION  
 LEVEL FIVE  
 HVAC  
 SHEET NUMBER:

# M-18



ISSUED: 11-12-79  
 DRAWN BY: T.R.R.  
 CHECKED BY: S.R.W.  
 REVISED:  
 12-15-79 AS NOTED  
 4-15-80 AHJ SCRAMING ADDED

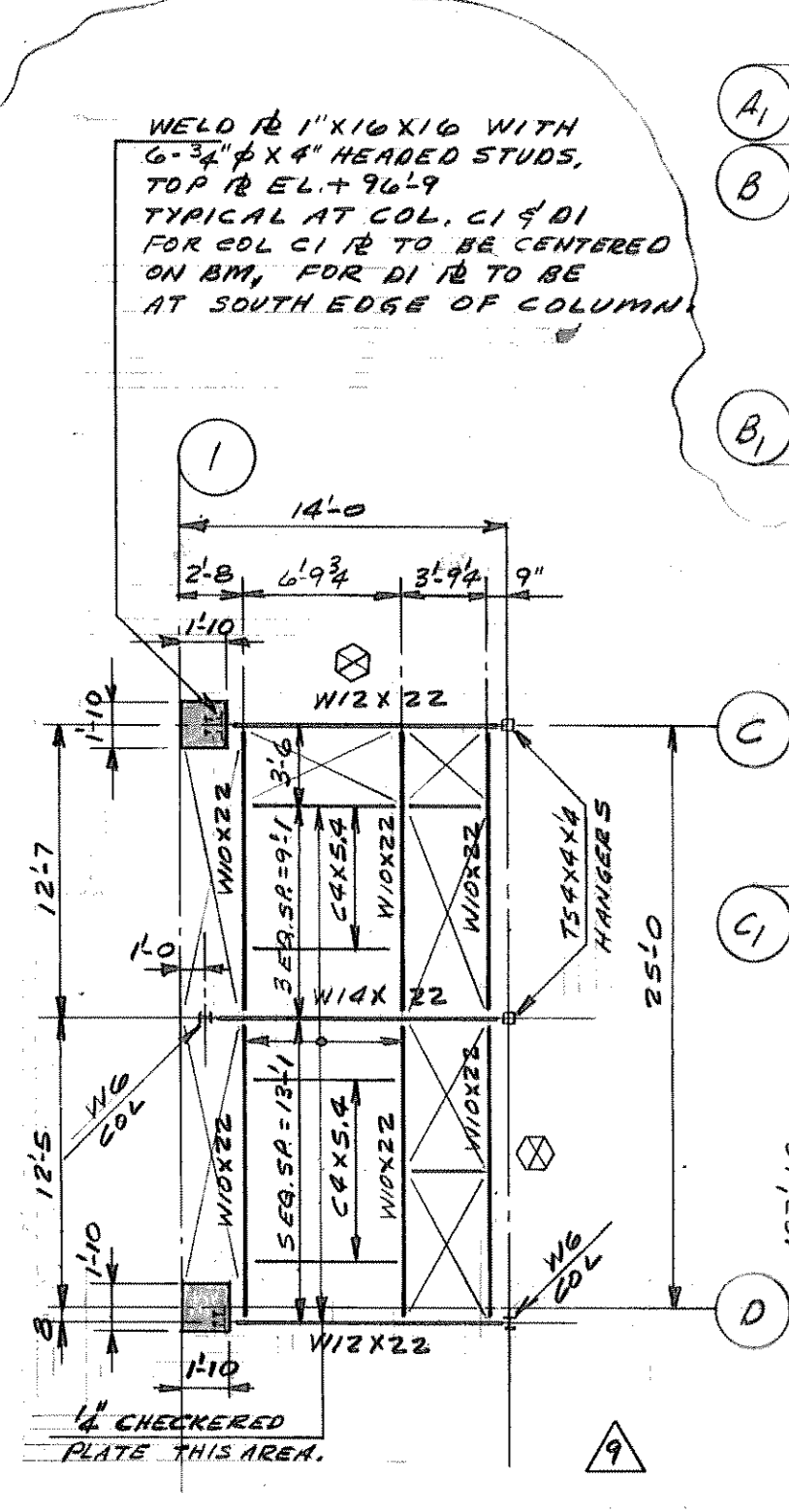
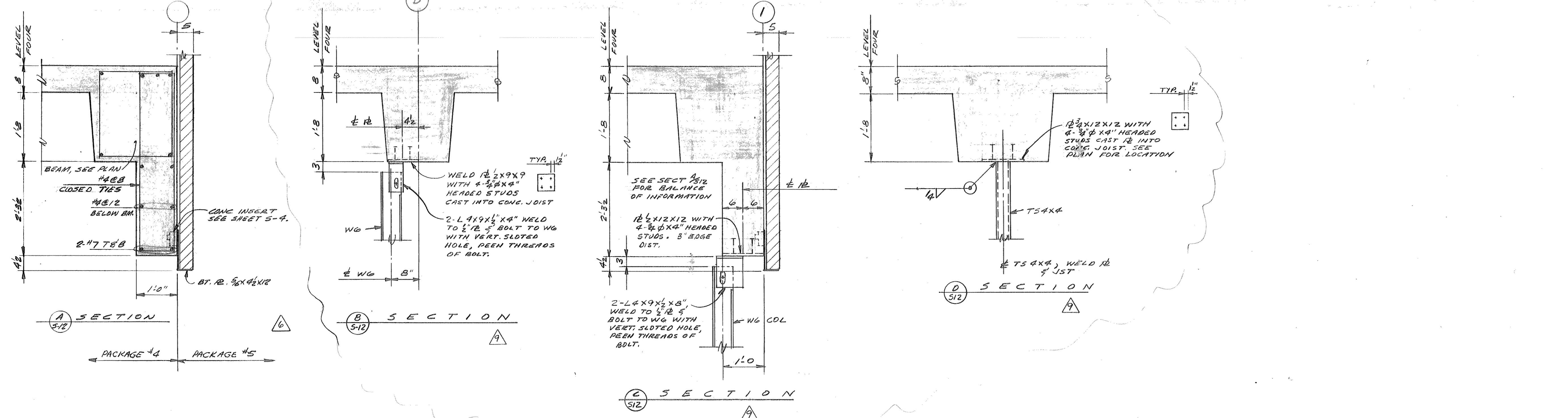


THE WARNER ASSOCIATES  
 HEALTH CARE CONSULTANTS  
 CONSULTING ENGINEERS INC.  
 ALPHER ASSOCIATES, INC.  
 CONSULTING ENGINEERS  
 ELMER ERNSSEL, INC.  
 CIVIL ENGINEER  
 EARL W. MEYER & ASSOCIATES  
 ARCHITECTS  
 ARCHITECTS  
 CORVUBIA  
 CONSTRUCTION MANAGER



**SACRED HEART HOSPITAL**  
**PROPOSED NEW FACILITY &**  
**RENOVATION OF SHARED SPACE**  
**YANKTON, SOUTH DAKOTA**

SHEET DESCRIPTION  
 LEVEL FOUR PLAN  
 SHEET NUMBER



BEAM SCHEDULE LEVEL FOUR

| MARK | SIZE     | REINFORCEMENT PER BEAM |     |     |        |          | REMARKS              |   |
|------|----------|------------------------|-----|-----|--------|----------|----------------------|---|
|      |          | BOTTOM                 |     | TOP |        | STIRRUPS |                      |   |
|      |          | A                      | B   | A   | OTHERS |          |                      |   |
| B1   | 12x28    | 1.4                    | 2.4 | 2.4 | —      | 30.4     | 103, 1012            | ALL REIN TO BE CONT.  |
| B2   | 14x28    | 1.4                    | 1.4 | 2.4 | —      | 6.4      | 103, 2012            | ALL REIN TO BE CONT.  |
| B3   | 12x28    | 1.4                    | 1.4 | 2.4 | —      | 6.4      | 103, 2012            | ALL REIN TO BE CONT.  |
| B4   | 12x28    | 1.4                    | 1.4 | 2.4 | —      | 22.4     | 103, 10010           | ALL REIN TO BE CONT.  |
| B5   | 24x28    | 2.4                    | 3.4 | 2.4 | 2.4    | 22.4     | 103, 10012           | 2.4" AT EACH END OF BM. TOP "A" BAR CONT THRU BM.                                 |
| B6   | 24x28    | 2.4                    | 3.4 | 2.4 | 2.4    | 22.4     | 103, 10012           | 2.4" AT EACH END OF BM. TOP "A" BAR CONT THRU BM.                                 |
| B7   | 18x28    | 2.4                    | 2.4 | 3.4 | —      | 24.4     | 103, 11012           | ALL REIN TO BE CONT.  |
| B8   | 24x28    | 2.4                    | 2.4 | 2.4 | 2.4    | 22.4     | 103, 10012           | TOP "A" BARS CENTERED OVER EAST SUPT. 2.4" OTHER BARS EXT FROM E END TO WEST END. |
| B9   | 24x28    | 2.4                    | 2.4 | —   | 2.4    | 24.4     | 103, 11012           | 2.4" TOP OTHER BARS EXT FROM E OR W TO E OR W.                                    |
| B10  | 24x28    | 2.4                    | 2.4 | 2.4 | 2.4    | 12.4     | 103, 5012            | TOP "A" BARS CENTERED OVER EAST SUPT. 2.4" OTHER BARS EXT FROM E END TO WEST END. |
| B11  | 24x28    | 2.4                    | 2.4 | 2.4 | 2.4    | 24.4     | 103, 11012           | TOP "A" BARS CENTERED OVER EAST SUPT. 2.4" OTHER BARS EXT FROM E END TO WEST END. |
| B12  | 24x28    | 2.4                    | 2.4 | —   | 2.4    | 22.4     | 103, 10012           | 2.4" TOP OTHER BARS EXT FROM E OR W TO E OR W.                                    |
| B13  | 16x28    | 1.4                    | 1.4 | 3.4 | 2.4    | 2.4      | 103, 8012            | TOP "A" BARS CENTERED OVER EAST SUPT. 2.4" AT WEST SUPT.                          |
| B14  | 24x28    | 2.4                    | 2.4 | 3.4 | 2.4    | 16.4     | 103, 6012            | TOP "A" BARS CENTERED OVER EAST SUPT.   |
| B15  | 32/24x28 | 2.4                    | 3.4 | 3.4 | 2.4    | 24.4     | 103, 400, 1010, 6012 | TOP "A" BARS CENTERED OVER EAST SUPT.   |
| B16  | 24x28    | 2.4                    | 2.4 | 4.4 | —      | 12.4     | 103, 5012            | TOP "A" BARS CENTERED OVER EAST SUPT.   |
| B17  | 24x28    | 2.4                    | 3.4 | —   | 2.4    | 18.4     | 103, 8012            | 2.4" AT 2.4" AT EAST SUPT.  |
| B18  | 24x28    | 2.4                    | 3.4 | 4.4 | —      | 18.4     | 103, 8012            | 2.4" AT 2.4" AT WEST SUPT.  |
| B19  | 16x28    | 1.4                    | 1.4 | —   | 2.4    | 18.4     | 103, 8012            | 2.4" AT EAST SUPT.  |
| B20  | 24x28    | 2.4                    | 2.4 | 2.4 | 2.4    | 24.4     | 103, 11012           | TOP "A" BARS CENTERED OVER SOUTH SUPT. 2.4" OTHER BARS EXT FROM NORTH TO SOUTH.   |
| B21  | 24x28    | 2.4                    | 2.4 | 2.4 | 4.4    | 24.4     | 103, 11012           | TOP "A" BARS CENTERED OVER SOUTH SUPT. 2.4" OTHER BARS EXT FROM N TO S.           |
| B22  | 24x28    | 2.4                    | 2.4 | 2.4 | 2.4    | 24.4     | 103, 11012           | TOP "A" BARS CENTERED OVER SOUTH SUPT. 2.4" OTHER BARS EXT FROM N TO S.           |
| B23  | 24x28    | 2.4                    | 2.4 | 3.4 | 2.4    | 10.4     | 103, 4012            | TOP "A" BARS CENTERED OVER SOUTH SUPT. 2.4" OTHER BARS EXT FROM N TO S.           |
| B24  | 24x28    | 2.4                    | 2.4 | 3.4 | —      | 10.4     | 103, 4012            | TOP "A" BARS CENTERED OVER SOUTH SUPT.  |
| B25  | 24x28    | 2.4                    | 2.4 | 3.4 | —      | 14.4     | 103, 6012            | TOP "A" BARS CENTERED OVER SOUTH SUPT.  |
| B26  | 24x28    | 2.4                    | 2.4 | —   | 2.4    | 10.4     | 103, 4012            | 2.4" AT 2.4" AT SOUTH SUPT.   |
| B27  | 12x28    | 1.4                    | 1.4 | 2.4 | —      | 8.4      | 103, 300             | ALL BARS TO BE CONT. THRU BM.   |
| B28  | 15x28    | 1.4                    | 2.4 | 3.4 | —      | 10.4     | 103, 4012            | ALL BARS TO BE CONT.  |

BEAM SCHEDULE LEVEL FIVE

| MARK | SIZE     | REINFORCEMENT PER BEAM |     |     |       |          | REMARKS         |   |
|------|----------|------------------------|-----|-----|-------|----------|-----------------|---|
|      |          | BOTTOM                 |     | TOP |       | STIRRUPS |                 |   |
|      |          | A                      | B   | A   | OTHER |          |                 |   |
| B1   | 24x28    | 2.4                    | 3.4 | 3.4 | 2.4   | 24.4     | 103, 11012      | CTR 1.4" TOP OVER SUPT. EA. END. EXT. 0" NORTH OF GRID "E". 1.4" TOP INTO SOUTH SUPT. WEST END OF BEAM. |
| B2   | 24x28    | 2.4                    | 3.4 | —   | 2.4   | 24.4     | 103, 11012      | TOP FROM 2.0" SOUTH OF E OR W TO 2.0" NORTH OF W OR E.  |
| B3   | 24x28    | 2.4                    | 3.4 | 6.4 | —     | 24.4     | 103, 11012      | CTR 1.4" TOP OVER SUPT. EA. END. EXT. 0" NORTH OF GRID "E". 1.4" TOP INTO SOUTH SUPT. WEST END OF BEAM. |
| B4   | 24x28    | 2.4                    | 3.4 | —   | 2.4   | 24.4     | 103, 11012      | CTR 1.4" TOP OVER SUPT. EA. END. EXT. 0" NORTH OF GRID "E". 1.4" TOP INTO SOUTH SUPT. WEST END OF BEAM. |
| B5   | 24x28    | 2.4                    | 3.4 | 3.4 | 2.4   | 24.4     | 103, 11012      | CTR 1.4" TOP OVER SUPT. EA. END. EXT. 0" NORTH OF GRID "E". 1.4" TOP INTO SOUTH SUPT. WEST END OF BEAM. |
| B6   | 24x28    | 2.4                    | 3.4 | —   | —     | 24.4     | 103, 11012      | CTR 1.4" TOP OVER SUPT. EA. END. EXT. 0" NORTH OF GRID "E". 1.4" TOP INTO SOUTH SUPT. WEST END OF BEAM. |
| B7   | 24x28    | 2.4                    | 3.4 | —   | 3.4   | 12.4     | 103, 5012       | CTR 1.4" TOP OVER SUPT. EA. END. EXT. 0" NORTH OF GRID "E". 1.4" TOP INTO SOUTH SUPT. WEST END OF BEAM. |
| B8   | 24x28    | 2.4                    | 3.4 | —   | 3.4   | 24.4     | 103, 11012      | CTR 1.4" TOP OVER SUPT. EA. END. EXT. 0" NORTH OF GRID "E". 1.4" TOP INTO SOUTH SUPT. WEST END OF BEAM. |
| B9   | 24x28    | 2.4                    | 3.4 | —   | 2.4   | 24.4     | 103, 11012      | CTR 1.4" TOP OVER SUPT. EA. END. EXT. 0" NORTH OF GRID "E". 1.4" TOP INTO SOUTH SUPT. WEST END OF BEAM. |
| B10  | 12x28    | —                      | 2.4 | —   | 2.4   | 24.4     | 103, 8012, 3024 | TOP FROM EAST SUPT TO WEST SUPT. 1/2" EA. END.  |
| B11  | 12x28    | —                      | 2.4 | —   | 2.4   | 20.4     | 103, 9011       | TOP FROM EAST SUPT TO WEST SUPT. 1/2" EA. END.  |
| B12  | 25x28    | —                      | 3.4 | —   | 3.4   | 12.4     | 103, 5012       | CTR 1.4" TOP OVER SUPT. EA. END. EXT. 0" NORTH OF GRID "E". 1.4" TOP INTO SOUTH SUPT. WEST END OF BEAM. |
| B13  | 25x28    | —                      | 3.4 | —   | 3.4   | 10.4     | 103, 4012       | CTR 1.4" TOP OVER SUPT. EA. END. EXT. 0" NORTH OF GRID "E". 1.4" TOP INTO SOUTH SUPT. WEST END OF BEAM. |
| B14  | 25x28    | —                      | 3.4 | —   | 3.4   | 10.4     | 103, 4012       | CTR 1.4" TOP OVER SUPT. EA. END. EXT. 0" NORTH OF GRID "E". 1.4" TOP INTO SOUTH SUPT. WEST END OF BEAM. |
| B15  | 25x28    | —                      | 3.4 | —   | 3.4   | 18.4     | 103, 8012       | CTR 1.4" TOP OVER SUPT. EA. END. EXT. 0" NORTH OF GRID "E". 1.4" TOP INTO SOUTH SUPT. WEST END OF BEAM. |
| B16  | 25x28    | —                      | 3.4 | —   | —     | 10.4     | 103, 4012       | CTR 1.4" TOP OVER SUPT. EA. END. EXT. 0" NORTH OF GRID "E". 1.4" TOP INTO SOUTH SUPT. WEST END OF BEAM. |
| B17  | 25x28    | —                      | 3.4 | —   | 3.4   | 12.4     | 103, 5012       | CTR 1.4" TOP OVER SUPT. EA. END. EXT. 0" NORTH OF GRID "E". 1.4" TOP INTO SOUTH SUPT. WEST END OF BEAM. |
| B18  | 25x28    | —                      | 3.4 | —   | 3.4   | 12.4     | 103, 5012       | CTR 1.4" TOP OVER SUPT. EA. END. EXT. 0" NORTH OF GRID "E". 1.4" TOP INTO SOUTH SUPT. WEST END OF BEAM. |
| B19  | 25x28    | —                      | 3.4 | —   | 3.4   | 10.4     | 103, 4012       | CTR 1.4" TOP OVER SUPT. EA. END. EXT. 0" NORTH OF GRID "E". 1.4" TOP INTO SOUTH SUPT. WEST END OF BEAM. |
| B20  | 25x28    | —                      | 3.4 | —   | 3.4   | 18.4     | 103, 8012       | CTR 1.4" TOP OVER SUPT. EA. END. EXT. 0" NORTH OF GRID "E". 1.4" TOP INTO SOUTH SUPT. WEST END OF BEAM. |
| B21  | 26x28    | —                      | 3.4 | —   | 3.4   | 10.4     | 103, 4012       | CTR 1.4" TOP OVER SUPT. EA. END. EXT. 0" NORTH OF GRID "E". 1.4" TOP INTO SOUTH SUPT. WEST END OF BEAM. |
| B22  | 25x28    | —                      | 3.4 | —   | —     | 10.4     | 103, 4012       | CTR 1.4" TOP OVER SUPT. EA. END. EXT. 0" NORTH OF GRID "E". 1.4" TOP INTO SOUTH SUPT. WEST END OF BEAM. |
| B23  | 25x28    | —                      | 3.4 | —   | 3.4   | 12.4     | 103, 5012       | CTR 1.4" TOP OVER SUPT. EA. END. EXT. 0" NORTH OF GRID "E". 1.4" TOP INTO SOUTH SUPT. WEST END OF BEAM. |
| B24  | 16x28    | —                      | 2.4 | —   | 2.4   | 38.4     | 103, 1200, 6012 | CTR 1.4" TOP OVER SUPT. EA. END. EXT. 0" NORTH OF GRID "E". 1.4" TOP INTO SOUTH SUPT. WEST END OF BEAM. |
| B25  | 24x28    | —                      | 3.4 | —   | 2.4   | 14.4     | 103, 6012       | CTR 1.4" TOP OVER SUPT. EA. END. EXT. 0" NORTH OF GRID "E". 1.4" TOP INTO SOUTH SUPT. WEST END OF BEAM. |
| B26  | 32/24x28 | —                      | 3.4 | —   | 2.4   | 34.4     | 103, 1000       | CTR 1.4" TOP OVER SUPT. EA. END. EXT. 0" NORTH OF GRID "E". 1.4" TOP INTO SOUTH SUPT. WEST END OF BEAM. |
| B27  | 24x28    | —                      | 3.4 | —   | 2.4   | 14.4     | 103, 6012       | CTR 1.4" TOP OVER SUPT. EA. END. EXT. 0" NORTH OF GRID "E". 1.4" TOP INTO SOUTH SUPT. WEST END OF BEAM. |
| B28  | 24x28    | —                      | 3.4 | —   | 3.4   | 26.4     | 103, 12010      | CTR 1.4" TOP OVER SUPT. EA. END. EXT. 0" NORTH OF GRID "E". 1.4" TOP INTO SOUTH SUPT. WEST END OF BEAM. |
| B29  | 24x28    | —                      | 3.4 | —   | 3.4   | 26.4     | 103, 12010      | CTR 1.4" TOP OVER SUPT. EA. END. EXT. 0" NORTH OF GRID "E". 1.4" TOP INTO SOUTH SUPT. WEST END OF BEAM. |
| B30  | 24x28    | —                      | 3.4 | —   | 2.4   | 14.4     | 103, 6012       | CTR 1.4" TOP OVER SUPT. EA. END. EXT. 0" NORTH OF GRID "E". 1.4" TOP INTO SOUTH SUPT. WEST END OF BEAM. |
| B31  | 32/24x28 | —                      | 3.4 | —   | 2.4   | 34.4     | 103, 1000       | CTR 1.4" TOP OVER SUPT. EA. END. EXT. 0" NORTH OF GRID "E". 1.4" TOP INTO SOUTH SUPT. WEST END OF BEAM. |
| B32  | 24x28    | —                      | 3.4 | —   | 2.4   | 14.4     | 103, 6012       | CTR 1.4" TOP OVER SUPT. EA. END. EXT. 0" NORTH OF GRID "E". 1.4" TOP INTO SOUTH SUPT. WEST END OF BEAM. |
| B33  | 16x28    | —                      | 2.4 | —   | 2.4   | 38.4     | 103, 1200, 6012 | CTR 1.4" TOP OVER SUPT. EA. END. EXT. 0" NORTH OF GRID "E". 1.4" TOP INTO SOUTH SUPT. WEST END OF BEAM. |
| B34  | 12x28    | —                      | 2.4 | —   | 2.4   | 18.4     | 103, 8012       | CTR 1.4" TOP OVER SUPT. EA. END. EXT. 0" NORTH OF GRID "E". 1.4" TOP INTO SOUTH SUPT. WEST END OF BEAM. |
| B35  | 8x28     | —                      | 2.4 | —   | 2.4   | 10.4     | 103, 4012       | CTR 1.4" TOP OVER SUPT. EA. END. EXT. 0" NORTH OF GRID "E". 1.4" TOP INTO SOUTH SUPT. WEST END OF BEAM. |

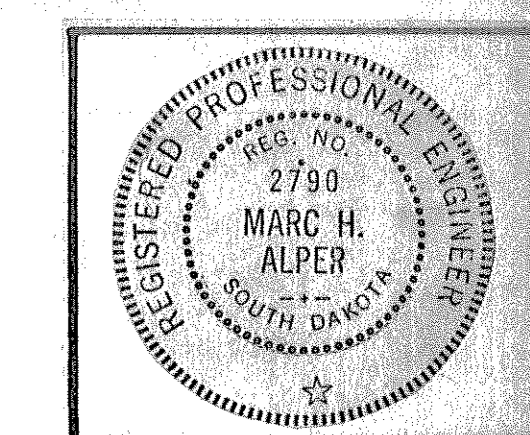
JOIST SCHEDULE LEVEL FOUR

| JOIST MARK | SIZE     | BOTTOM |      | TOP |     | REMARKS  |
|------------|----------|--------|------|-----|-----|--|
|            |          | A      | B    | A   | B   |  |
|            |          | J1     | 6x28 | 1.4 | 1.4 |  |
| J2         | 18x28    | 1.4    | 2.4  | —   | 1.4 | TOP "B" BARS @ EA. END OF JST.   |
| J3         | 6x28     | 1.4    | 1.4  | —   | 2.4 | TOP "B" BARS @ EA. END OF JST.   |
| J4         | 6x28     | 1.4    | 1.4  | 1.4 | 1.4 | TOP "A" 1.4" BARS CENTERED OVER SOUTH SUPT. TOP 1.4" @ 1.4" @ NORTH SUPT.          |
| J5         | 6x28     | 1.4    | 1.4  | —   | 2.4 | TOP "B" BARS @ SOUTH SUPT.   |
| J6         | 6x28     | 1.4    | 1.4  | 1.4 | 1.4 | TOP "A" 1.4" BARS CENTERED OVER NORTH SUPT. TOP 1.4" @ 1.4" @ SOUTH SUPT.          |
| J7         | 6x28     | 1.4    | 1.4  | —   | 2.4 | TOP "B" BARS @ NORTH SUPT.   |
| J8         | 6x28     | 1.4    | 1.4  | 1.4 | 1.4 | TOP "A" 1.4" BARS CENTERED OVER SOUTH SUPT. TOP 1.4" @ 1.4" @ NORTH SUPT.          |
| J9         | 6x28     | 1.4    | 1.4  | 1.4 | 1.4 | TOP "A" 1.4" BARS CENTERED OVER SOUTH SUPT.  |
| J10        | 6x28     | 1.4    | 1.4  | —   | 2.4 | TOP "B" BARS @ SOUTH SUPT.   |
| J11        | 6x28     | 1.4    | 1.4  | —   | 2.4 | TOP "B" BARS @ EA. END OF JST.   |
| J12        | 2/18x28  | 1.4    | 2.4  | 2.4 | 1.4 | TOP "A" BARS CENTERED OVER SOUTH SUPT. 1.4" EXT INTO J10. 1.4" @ TOP @ SOUTH SUPT. |
| J13        | 16/18x28 | 1.4    | 2.4  | 2.4 | 1.4 | TOP "A" BARS CENTERED OVER SOUTH SUPT. 1.4" EXT INTO J10. 1.4" @ TOP @ SOUTH SUPT. |
| J14        | 6x28     | 1.4    | 1.4  | —   | 1.4 | TOP "B" BARS @ NORTH SUPT.   |
| J15        | 6x28     | 1.4    | 1.4  | 2.4 | —   | TOP "A" BARS CONT THRU J16. 1.4" @ NORTH OF GRID "C".                              |
| J16        | 6x28     | 1.4    | 1.4  | —   | 1.4 | TOP "B" BARS @ SOUTH SUPT.   |
| J17        | 6x28     | 1.4    | 1.4  | 2.4 | —   | TOP "A" BARS CONT THRU J17. 1.4" @ 10' SOUTH OF "D".                               |

JOIST SCHEDULE LEVEL FIVE

| JOIST MARK | SIZE  | BOTTOM |      | TOP |            | REMARKS   |
|------------|-------|--------|------|-----|------------|---|
|            |       | A      | B    | A   | B OR OTHER |   |
|            |       | J1     | 6x28 | —   | 2.4        |   |
| J2         | 18x28 | —      | 4.4  | —   | 8.4        | 4 TOP @ EA. END   |
| J3         | 6x28  | —      | 2.4  | —   | 4.4        | 2 TOP @ EA. END   |
| J4         | 6x28  | 1.4    | 1.4  | —   | 2.4        | TOP FROM GRID "C" TO GRID "D"   |
| J5         | 6x28  | —      | 2.4  | —   | 2.4        | TOP FROM GRID "E" TO GRID "D". SEE STAIR DETAIL 3 ON SHEET 318 FOR ADDITIONAL REIN. |
| J6         | 22x28 | —      | 3.4  | —   | 3.4        | CTR 1.4" TOP OVER BEAM. SEE STAIR DETAIL 3 ON SHEET 318 FOR ADDITIONAL REIN.        |
| J7         | 6x28  | 1.4    | 1.4  | 2.4 | 2.4        | CTR 1.4" TOP OVER SUPT. EA. END.  |
| J8         | 6x28  | 1.4    | 1.4  | 2.4 | 2.4        | CTR 1.4" TOP OVER SUPT. EA. END.  |
| J9         | 25x28 | 2.4    | 2.4  | 6.4 | —          | CTR 1.4" TOP OVER SUPT. EA. END. 1.4" @ 1.4" @ SOUTH SUPT.                          |
| J10        | 24x28 | 2.4    | 2.4  | 6.4 | —          | CTR 1.4" TOP OVER SUPT. EA. END. 1.4" @ 1.4" @ SOUTH SUPT.                          |
| J11        | 21x28 | 1.4    | 2.4  | 2.4 | 2.4        | CTR 1.4" TOP OVER SUPT. EA. END.  |
| J12        | 6x28  | —      | 2.4  | —   | 2.4        | TOP FROM MECH. OPENING TO GRID "C"  |
| J13        | 6x28  | —      | 2.4  | —   | 2.4        | TOP FROM MECH. OPENING TO GRID "C"  |
| J14        | 16x28 | 1.4    | 2.4  | 2.4 | 2.4        | CTR 1.4" TOP OVER SUPT. EA. END.  |
| J15        | 6x28  | 1.4    | 1.4  | 2.4 | 2.4        | CTR 1.4" TOP OVER SUPT. EA. END.  |
| J16        | 22x28 | —      | 3.4  | —   | 3.4        | TOP FROM GRID "D" TO GRID "E". SEE STAIR DETAIL 3 ON SHEET 318 FOR ADDITIONAL REIN. |
| J17        | 6x28  | —      | 2.4  | —   | 2.4        | TOP FROM GRID "D" TO GRID "E"   |

| Date         | Purpose of Issue |
|--------------|------------------|
| NOV 12, 1979 | BID PACKAGE #4   |
|              |                  |
|              |                  |
|              |                  |



ISSUED: 11-12-79  
DRAWN BY: T.R.P.  
CHECKED BY: S.R.W.  
REVISED:

**me**  
MECHANICAL ENGINEERS  
ELECTRICAL ENGINEERS  
PLUMBING ENGINEERS  
MECHANICAL CONTRACTORS  
ELECTRICAL CONTRACTORS  
PLUMBING CONTRACTORS

**SPECTRUM**  
Spectrum Development Corporation  
ARCHITECTS

THE WAMER ASSOCIATES  
HEALTH CARE CONSULTANTS  
CONSULTING ENGINEERS  
ALPER ASSOCIATES INC.  
CONSULTING ENGINEERS  
ELMER A. KRUSSEL INC.  
CIVIL ENGINEER  
EQUIPMENT CONSULTANTS  
ASSOCIATES  
CODE CONSULTANTS INC.  
CONSULTANTS  
CONSTRUCTION MANAGER

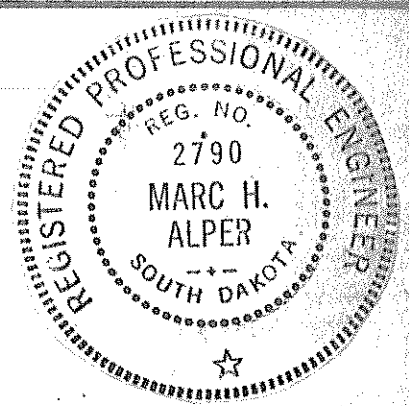
**SACRED HEART HOSPITAL**  
PROPOSED NEW FACILITY &  
RENOVATION OF SHARED SPACE  
YANKTON, SOUTH DAKOTA

SHEET DESCRIPTION  
LEVEL FOUR & FIVE  
BEAM & JOIST SCHEDULE

SHEET NUMBER

AS BUILT DRAWINGS

13



ISSUED: 11-12-79  
 DRAWN BY: T.R.P.  
 CHECKED BY: S.R.W.  
 REVISED:  
 12-15-79 AS NOTED

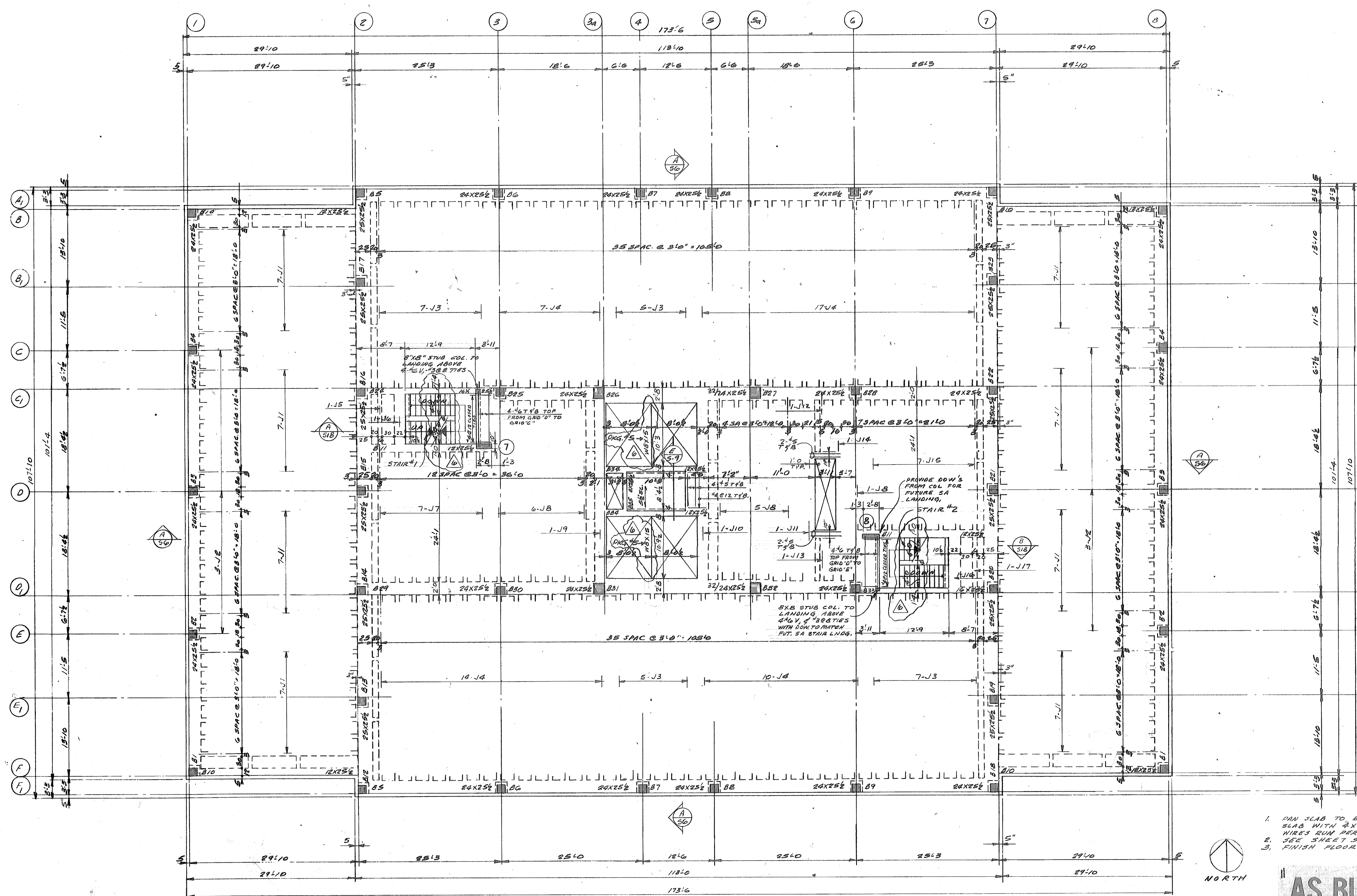


THE WARNER ASSOCIATES  
 HEALTH CARE CONSULTANTS  
 HEALTH CARE CONSULTANTS  
 CONSULTING ENGINEERS  
 ALPER ASSOCIATES, INC.  
 ARCHITECTS  
 ELMER A. KRUSSEL, INC.  
 CIVIL ENGINEER  
 EQUIPMENT CONSULTANTS  
 ASSOCIATES  
 CODE CONSULTANTS, INC.  
 CODE CONSULTANT  
 CONSTRUCTION MANAGER



Spectrum Development Corporation  
 Construction Manager

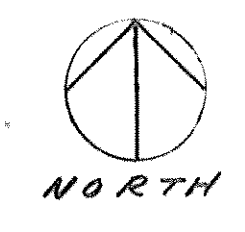
**SACRED HEART HOSPITAL**  
**PROPOSED NEW FACILITY &**  
**RENOVATION OF SHARED SPACE**  
 YANKTON, SOUTH DAKOTA



**BID PACKAGE CLARIFICATION**  
 1. ALL CONCRETE WORK & EMBEDDED ITEM IN CONCRETE IN PKG. #4.  
 2. PROVIDE STEEL BEAMS F COM, AS MARKED IN PACKAGE #5.

| Date          | Purpose of Issue   |
|---------------|--------------------|
| NOV. 13, 1979 | BID PACKAGE #4     |
| DEC. 15, 1979 | BID PACKAGE #5     |
| DEC. 15, 1979 | REV. TO PACKAGE #4 |
|               |                    |
|               |                    |
|               |                    |

- NOTES:**
1. FIN SLAB TO BE 50" THICK PLUS 5" FOR SLAB, BEING SLAB WITH 4" RE-WORKING W.I.R. THE LARGEST DIAM. W.I.R.S RUN PERPENDICULAR TO THE SPAN OF THE JOIST.
  2. SEE SHEET 5-13 FOR BEAM AND JOIST SCHEDULE.
  3. FINISH FLOOR ELEVATION = 4.10500.



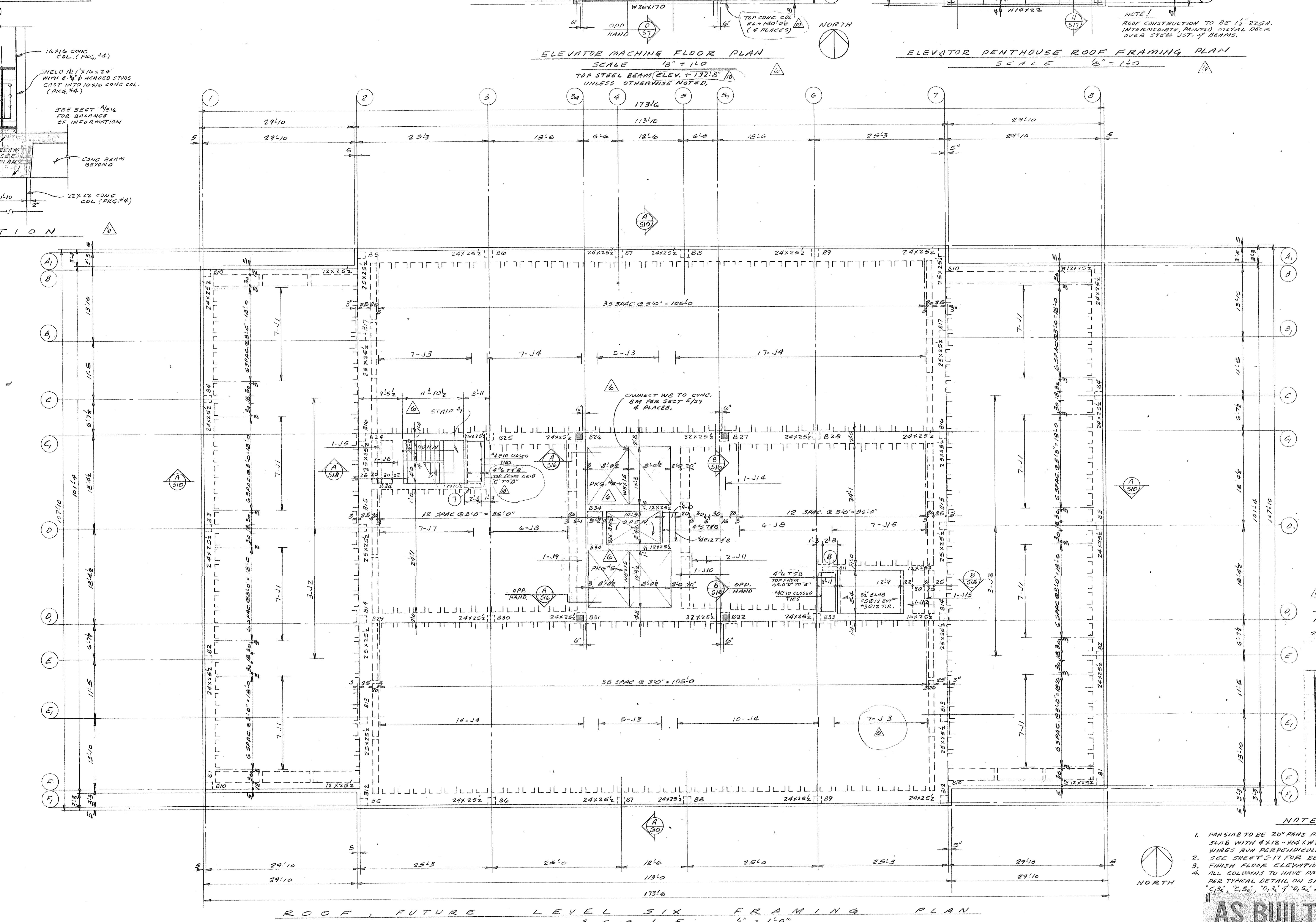
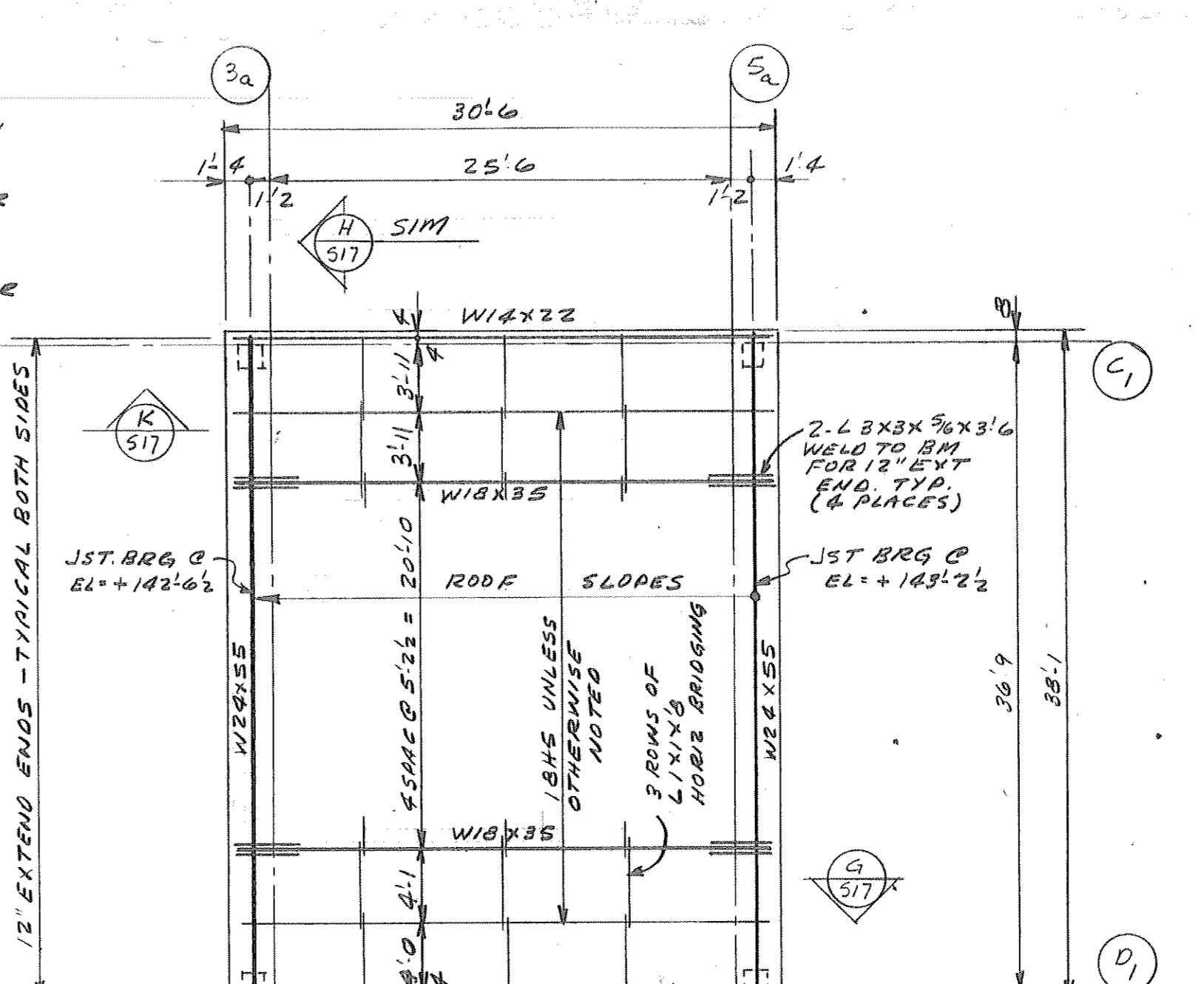
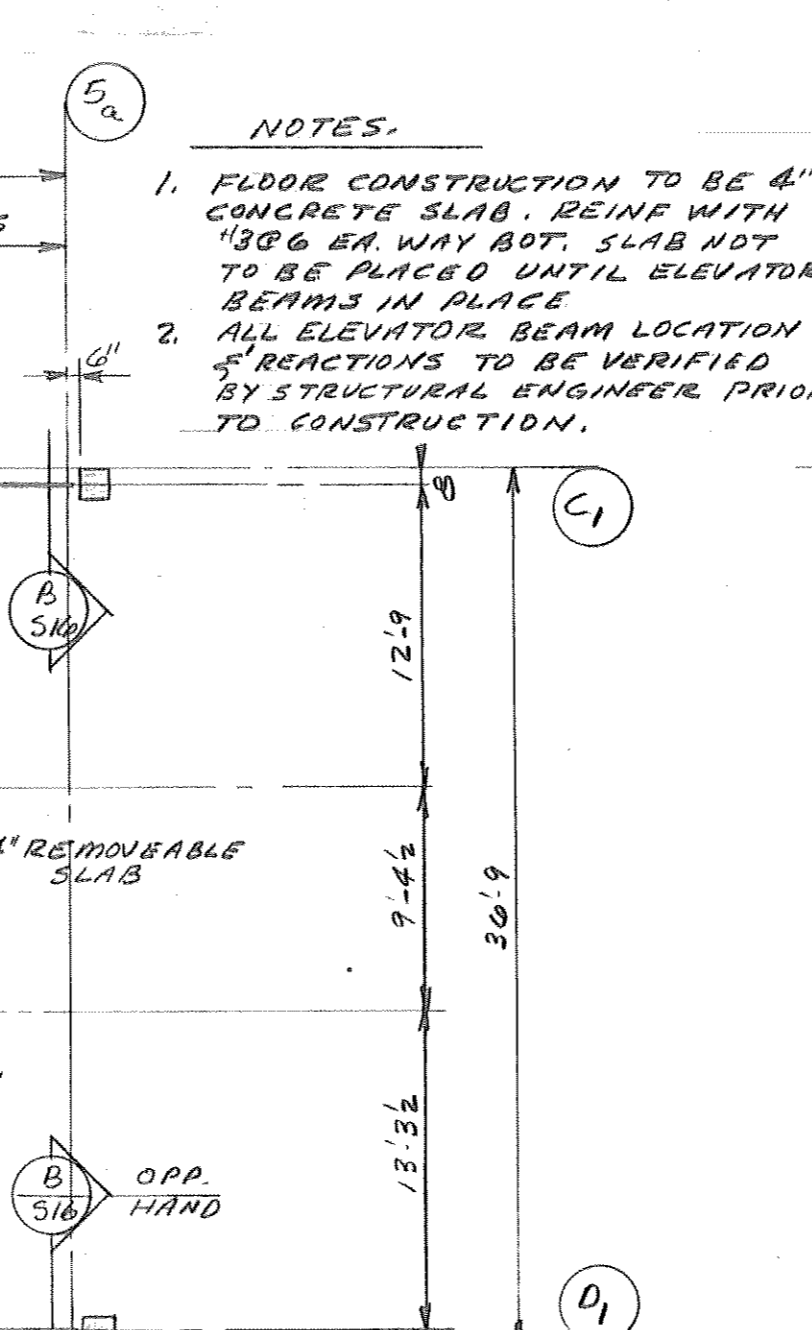
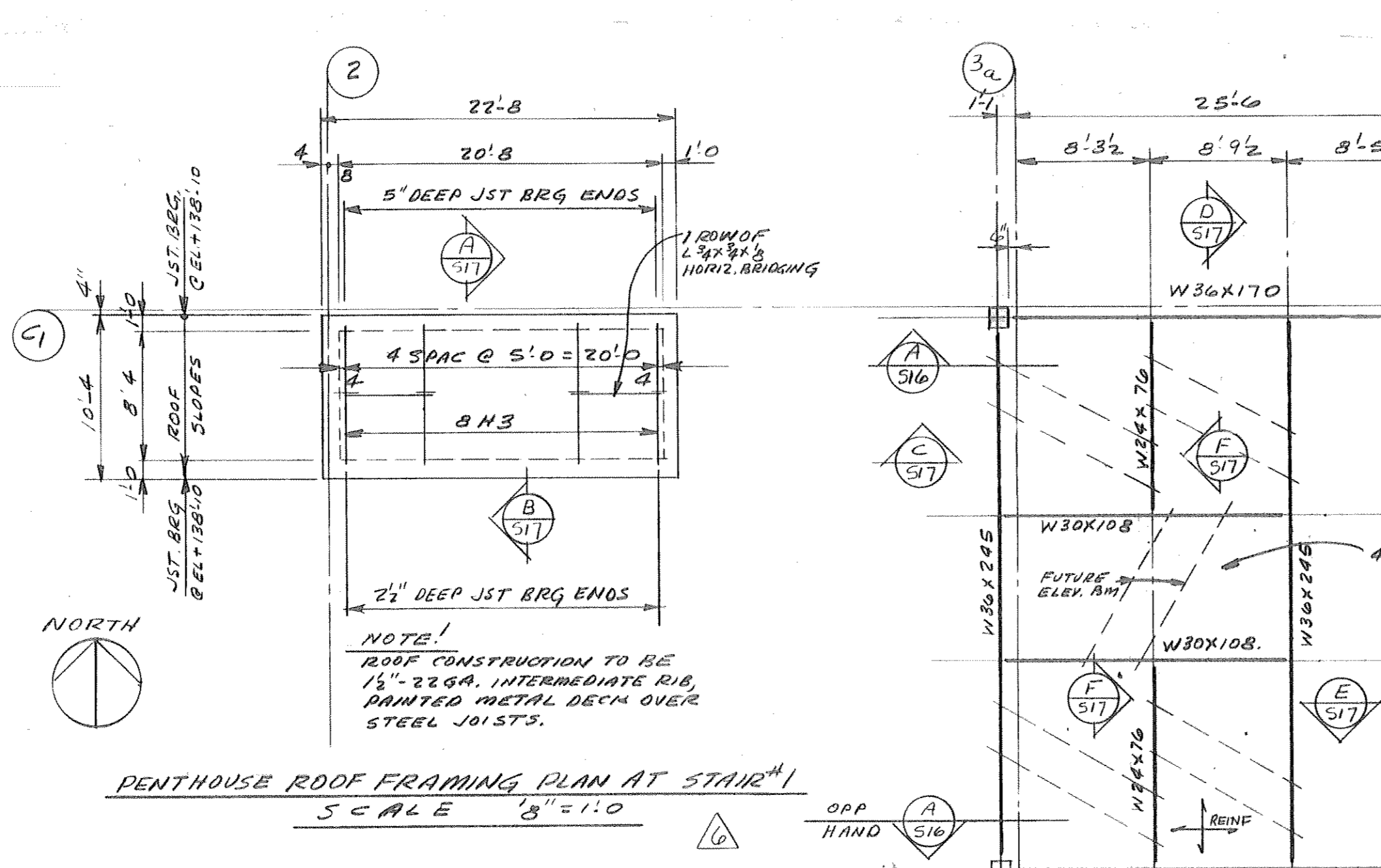
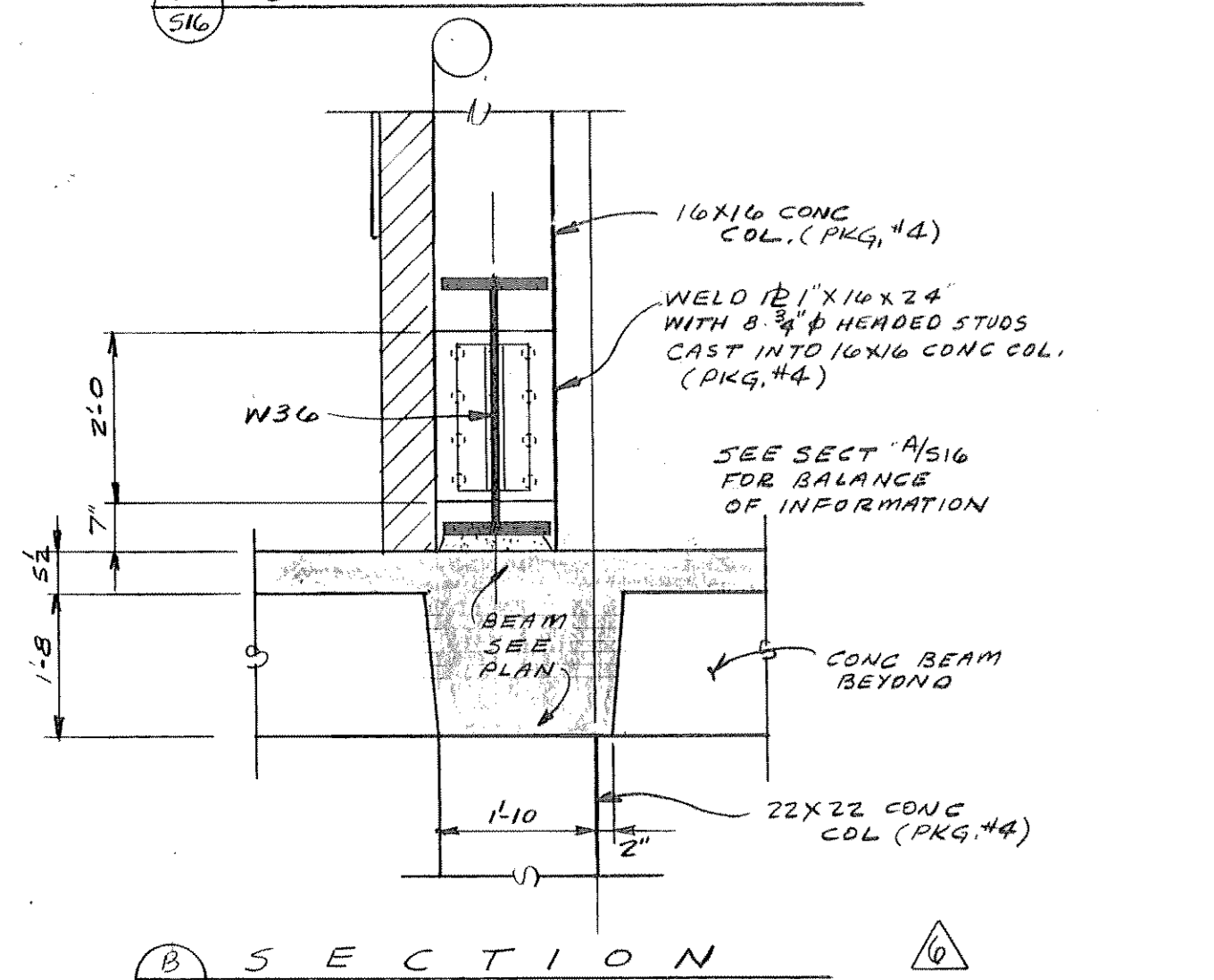
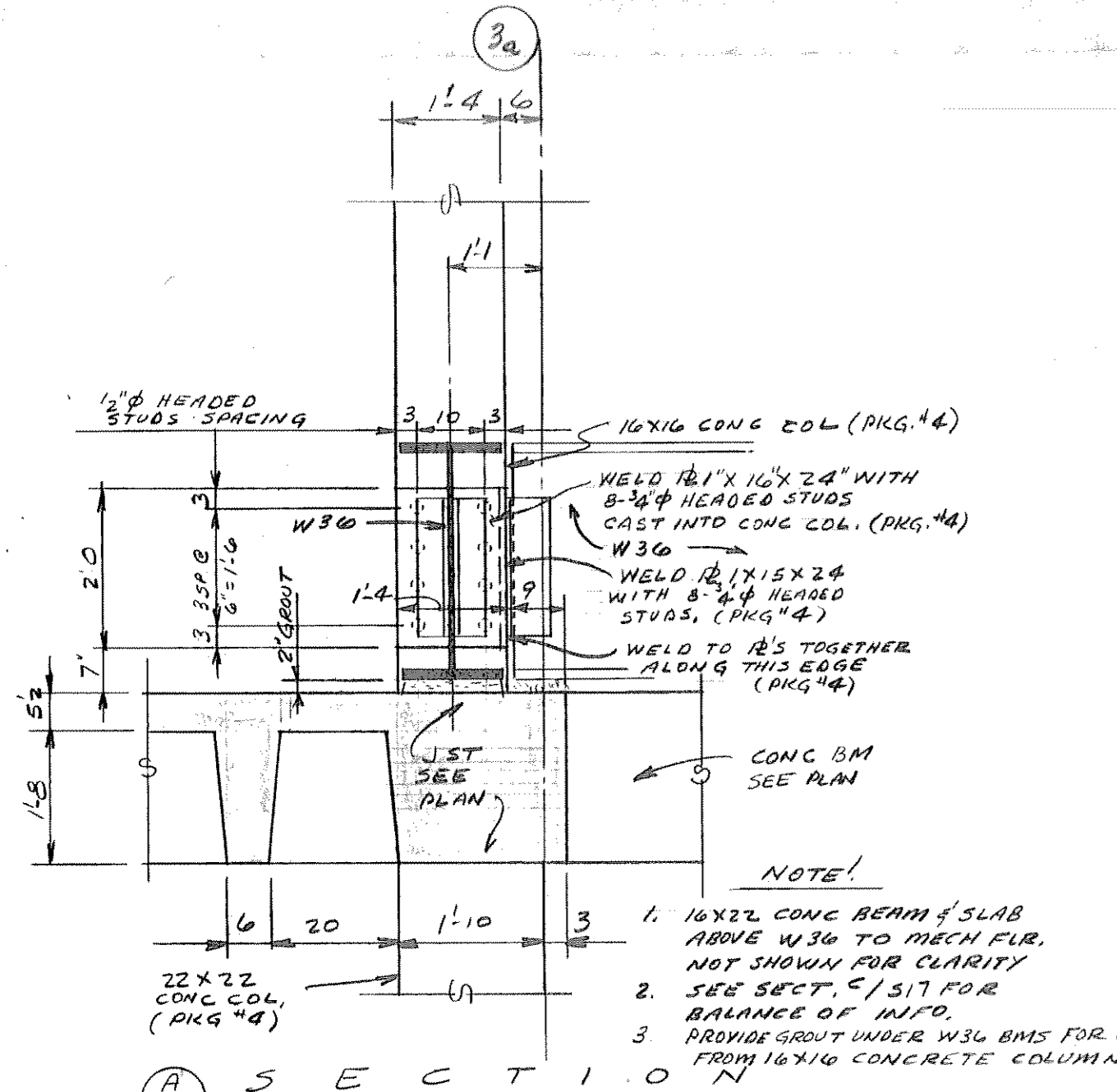
**LEVEL FIVE FRAMING PLAN**  
 SCALE 1/8" = 1'-0"

**AS BUILT DRAWINGS**

SHEET DESCRIPTION  
 LEVEL FIVE PLAN

SHEET NUMBER

**S 14**



**NOTES:**

- FLOOR CONSTRUCTION TO BE 4" CONCRETE SLAB, REINF WITH #5 @ 12" ON WAY BOT. SLAB NOT TO BE PLACED UNTIL ELEVATOR BEAMS IN PLACE.
- ALL ELEVATOR BEAM LOCATION & REACTIONS TO BE VERIFIED BY STRUCTURAL ENGINEER PRIOR TO CONSTRUCTION.

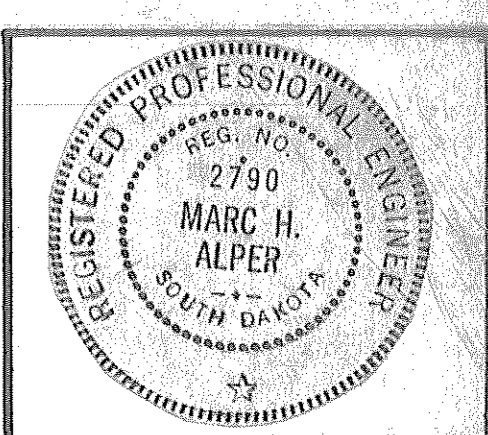
**BID PACKAGE CLARIFICATION**

- ALL CONCRETE WORK & EMBEDDED ITEM IN CONCRETE IN PKG. #4.
- STRUCTURAL STEEL JOISTS, BEAMS & METAL DECK IN PACKAGE #5.

| Date         | Purpose of Issue                    |
|--------------|-------------------------------------|
| NOV 12, 1979 | BID PACKAGE #4                      |
| DEC 16, 1979 | BID PACKAGE #5 & REV TO PACKAGE #4. |
|              |                                     |
|              |                                     |
|              |                                     |

**NOTES:**

- PANSAB TO BE 20' PANLS PLUS 5' FOR SLAB, REINF SLAB WITH #12-W#XW2 W.I.F. THE LARGER DIAM. WIRES RUN PERPENDICULAR TO THE SPAN OF THE JOIST.
- SEE SHEET S-17 FOR BEAM AND JOIST SCHEDULE.
- FINISH FLOOR ELEVATION = +129'-6"
- ALL COLUMNS TO HAVE PROVISION FOR FUTURE EXPANSION SEE TYPICAL DETAIL ON SHEET SA EXCEPT COLUMNS C-2, C-5, D-2, F-2, G-5.

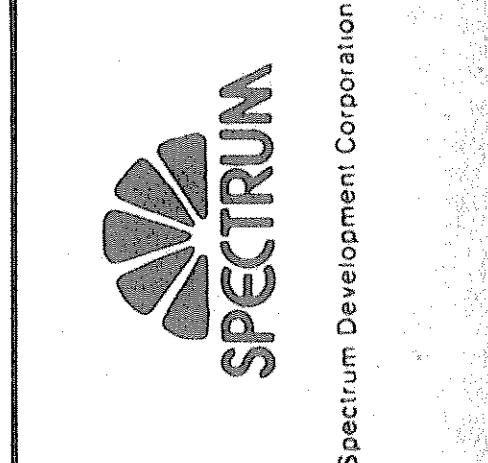


ISSUED: 11-12-79  
 DRAWN BY: T.A.A.  
 CHECKED BY: S.R.W.  
 REVISED:  
 12-15-79 AS NOTED  
 5-2-80 AS NOTED

**WGC**  
 WEINER GROUP CONSULTANTS  
 ARCHITECTS

**WHEATMEYER**  
 WEINER GROUP CONSULTANTS  
 ARCHITECTS

**THE WEINER ASSOCIATES**  
 HEALTH CARE CONSULTANTS  
 JACK R. WEINER & ASSOCIATES INC.  
 ALPER ASSOCIATES INC.  
 STRUCTURAL ENGINEER  
 CIVIL ENGINEER  
 EARL L. MEYER & ASSOCIATES  
 EQUIPMENT CONSULTANT  
 CODE CONSULTANT  
 MERCEDES CONSTRUCTION CO.  
 CONSTRUCTION MANAGER



**SACRED HEART HOSPITAL**  
**PROPOSED NEW FACILITY & RENOVATION OF SHARED SPACE**  
**YANKTON SOUTH DAKOTA**

**SHEET DESCRIPTION**  
 ROOF, FUTURE LEVEL SIX, ELEVATOR AND STAIR, PENTHOUSE PLANS.

**SHEET NUMBER**

